

Laser trackers and accessories

Product overview



Laser tracker products

This catalogue contains the complete range of products and accessories available for Leica Absolute Trackers.

Regardless of your particular application and the Hexagon portable products you use, we have you covered.

All of our products and accessories offer the same premium quality and practical design you would expect from a Swiss made product.

If you have any questions about our products or accessories, please contact your Hexagon sales person to receive competent guidance and make an appropriate purchasing decision.

Content

Leica Absolute Tracker ATS600	4
Leica Absolute Tracker AT960/930	20
Leica Absolute Scanner LAS and LAS-XL	42
Leica T-Scan 5	48
Leica T-Probe	52
Leica Absolute Tracker AT403	57
Leica B-Probe	69
Automation Products	71
OEM	82

Hexagon's Manufacturing Intelligence division

Leica Absolute Tracker ATS600

Main Sensors



Article	Description
576971	<p>Leica Absolute Tracker ATS600</p> <p>Laser tracker system with direct scanning capability. Direct scanning distance range up to 60 m, reflector distance range up to 80 m.</p> <p>The system consists of:</p> <ul style="list-style-type: none"> - Scanning laser tracker unit ATS600 - Calibration Certificate Metrology Gold (878571) - MTC51 AT9x0/ATS600 Transport Container (576891) - ATS Controller (576981) - MPS21 Power Supply Unit (576873) - MCS11 Sensor Cable 1.5 m (576885) - AT Quick Release Mount incl. Mandrel (576338) - MCA18 External Temperature Sensor 2 m (576888) - Red-Ring Reflector (RRR) 1.5" (575784) - MAC87 Reference Sphere d=90 mm (576947) - MSI26 Universal Stand Fixture (576895) - MAT33 Optical Cleaning Kit (576898) - Protective Sensor Cover (827057) - 24-Month Warranty* <p>* The 24-month factory warranty period is conditional on the performance of annual maintenance and calibration.</p>

Accessories

Mounting Solutions



Article	Description
576339	<p>AT Magnetic Mount</p> <p>Allows for mounting Absolute Tracker systems onto a magnetic surface. Does not include AT Quick Release Mount (576338) and AT Mounting Plate (576336).</p> <p>Compatibility: AT930, AT960, ATS600</p>



Article	Description
576940	<p>MAS80 Wall Mount Fixture 0°/180°</p> <p>Fixture for upright or inverted adaptation of Absolute Tracker systems onto concrete walls or structures. Adaptation of Leica Quick Release for AT930/960 or ATS600, or 5/8" thread for AT40x sensors. Integrated safety lever for Quick Release handle.</p> <p>Fixture contents:</p> <ul style="list-style-type: none"> - Installation instructions - MAS80 Wall Mount - Set of screws for adaptation of Quick Release - Set of screws, washers and heavy duty anchors for concrete walls - Set of cable ties for sensor cables - 5/8" threaded bolt for AT40x sensors <p>Compatibility: AT930, AT960, ATS600, AT403</p>

Hexagon's Manufacturing Intelligence division

Leica Absolute Tracker ATS600



576941 MAS81 Wall Mount Fixture 35°
 Fixture for inclined installation of AT9x0 sensors onto concrete walls or structures. Adaptation of Leica Quick Release for AT9x0 systems. Integrated safety lever for Quick Release handle.

Fixture Content:
 - Installation instructions
 - MAS81 Wall Mount
 - Set of screws for adaptation of Quick Release
 - Set of screws, washers and heavy duty anchors for concrete walls
 - Set of cable ties for sensor cables
 Compatibility: AT930, AT960



575837 Tripod Adapter
 To be used for various alignment or compensation measurements. Thread for tripod 5/8". Bore hole 12 mm (supports 577104/577208, not included)
 Compatibility: AT403, AT930, AT960, ATS600



575484 AT28 Aluminium Tripod
 Robust tripod for general use with adjustable centre column and 5/8" thread. Suitable for Total Stations, theodolites and laser tracker field check equipment. Instrument height from 1.4 to 2.8 m (4.6 - 9.2 ft), weight 12 kg (26.4 lb).
 Compatibility: AT403, AT9x0, ATS600



576897 MAA32 ATC 19"-Rack Fixture
 Designed to hold the AT Controller of the AT9x0 series or ATS Controller of the ATS600 in standard 19"-rack systems.
 Compatibility: AT930, AT960, ATS600



576895 MSI26 Universal ATC Stand Fixture
 Universal stand fixture for AT Controller with reusable Velcro strap (0.52 m).
 Compatible with:
 - AT Controller (576871, 576368)
 - ATS Controller (576981)
 - MPB25, Battery external Li-Ion 37V/8.1Ah (576875)
 Compatibility: AT403, AT9x0, ATS600



576920 MAS71 Power Supply Unit Fixture
 Fixture to hold a power supply unit by attaching to the stand, keeping the power supply off the ground. Holds the following power supply units:
 - MPS21 Power Supply Unit (576873)
 - AC/DC Adapter 15V (773058)

Attaches to the following stands/fixtures:
 - MST27 Stand Tube Extension (576881)
 - MST36 Portable Metrology Tripod Carbon (576901)
 - MSI26 Universal ATC Stand Fixture (576895)
 Compatibility: AT403, AT9x0, ATS600

Hexagon's Manufacturing Intelligence division

Leica Absolute Tracker ATS600

- | | |
|---|--|
|  | <p>576881 MST27 Stand Tube Extension
Designed for AT930/960 or ATS600 systems. Fits on the Absolute Tracker Stand (575997) (to be ordered separately).
Compatibility: AT930, AT960, ATS600</p> |
|  | <p>575997 Absolute Tracker Stand
Equipped with three levelling screws and shock absorbing wheels.
Compatibility: AT403, AT9x0, ATS600</p> |
|  | <p>576338 AT Quick Release Mount
For mounting an AT9x0 or AT901 system on the AT Stand Extension (576337), AT Mounting Plate (576336) or any other compatible instrument stand with 3.5"x8 thread adapter.
Compatibility: AT930, AT960, ATS600</p> |
|  | <p>576952 MAL93 Levelling Unit
Used to support the fine levelling process for the Orient-to-Gravity setup. Equipped with two fine-adjust elements (90°-oriented) to adjust the laser tracker's inclination. The MAL93 can be mounted on any compatible instrument stand with a 3.5"x8 thread. The AT Quick Release Mount (576338) is attached to the upper MAL93 interface to fix the laser tracker in place.</p> <p>Since AT9x0/ATS600 systems feature a dual-axis Orient-to-Gravity sensor, it is possible to setup the tracker with respect to gravity. The Orient-to-Gravity (OTG) process is optional for AT9x0/ATS600 systems, but an oriented-to-gravity configuration is needed for levelling applications.
Compatibility: AT930, AT960, ATS600 (reduced motor servo control loop parameters are required)</p> |
|  | <p>576336 AT Mounting Plate
Allows for mounting Absolute Tracker systems onto machine beds. Does not include AT Quick Release Mount (576338).
Compatibility: AT930, AT960, ATS600</p> |
|  | <p>6009768 MST27 Stand Set
Set consists of
- 1x MST27 Stand Tube Extension (576881)
- 1x Absolute Tracker Stand (575997)
Compatibility: AT403, AT930, AT960, ATS600</p> |
|  | <p>577351 AT Base Plate Type A
Base plate with non-adjustable pointed-tip feet for AT40x, AT9x0 and ATS600 sensor series. Adaptation 5/8" thread and borehole pattern for Quick Release adapter. Quick Release adapter not included. All stainless-steel finish. Plate height approx. 40 mm, weight 9 kg.
Compatibility: AT403, AT930, AT960, ATS600</p> |

Hexagon's Manufacturing Intelligence division

Leica Absolute Tracker ATS600



577352 AT Base Plate Type B
 Base plate with adjustable machine feet for levelling for AT40x, AT9x0 and ATS600 sensor series. Adaptation 5/8" thread and borehole pattern for Quick Release adapter. Type B is delivered with non-slip rubber-type machine feet. Quick Release adapter not included. All stainless-steel finish. Plate height approx. 60 mm. Weight 10 kg.
 Compatibility: AT403, AT930, AT960, ATS600



577353 AT Base Plate Type C
 Base plate with adjustable machine feet for levelling for AT40x, AT9x0 and ATS600 sensor series. Adaptation 5/8" thread and borehole pattern for Quick Release adapter. Type C is delivered with stainless-steel type machine feet. Quick Release adapter not included. All stainless-steel finish. Plate height approx. 60 mm. Weight 10 kg.
 Compatibility: AT403, AT930, AT960, ATS600



577354 AT Base Plate Type D
 Base plate with adjustable machine feet for levelling for AT40x, AT9x0 and ATS600 systems. Adaptation 5/8" thread and borehole pattern for Quick Release adapter. Type D is delivered with pointed-tip feet. Quick Release adapter not included. All stainless-steel finish. Plate height approx. 60 mm. Weight 9.5 kg.
 Compatibility: AT403, AT930, AT960, ATS600



577355 Pointed Screw Kit 80mm for AT Base Plates
 Conversion kit with pointed-tip feet for Base Plate Types B and C. Stainless steel.
 Compatibility: AT403, AT930, AT960, ATS600



575757 Wireless RF Control
 Wireless Radio Frequency Remote Control (2.4GHz), 4 custom programmable buttons, up to 45 m/150ft Range, USB interface, compatible with Windows XP or higher (32bit/64bit).
 Compatibility: AT403, AT9x0, ATS600



575965 Wireless Infrared Remote Control,
 4 custom programmable buttons, up to 20 m/65ft range, USB interface, compatible with Windows XP or higher (32bit/64bit).
 Compatibility: AT403, AT9x0, ATS600

Batteries






Article **Description**
576875 MPB25 Battery External Li-Ion 37V/8.1Ah
 External chargeable li-ion battery for AT930/960 or ATS600 systems. Connects to the AT Controller. Built-in charging technology. To charge the battery, the MPS21 Power Supply Unit (576873) is required (to be ordered separately). To mount the battery on a stand/tripod the MS126 Universal ATC Stand Fixture (576895) must be ordered separately.
 Battery Specifications: 37 V /8.1 Ah /299 Wh
 Compatibility: AT930, AT960, ATS600

Hexagon's Manufacturing Intelligence division

Leica Absolute Tracker ATS600

- | | |
|---|--|
|  | <p>576876 MCA24 Battery Cable 0.75 m
 Battery cable supports two use cases.
 1) Connects MPB25 battery to the AT Controller of the AT930/960 or ATS Controller of the ATS600.
 2) Connects 2 MPB25 batteries in a daisy-chain charging setup.
 Compatibility: AT930, AT960, ATS600</p> |
|  | <p>576874 MTC29 Hard Case for MPB25 Batteries
 Hard battery case that can hold:
 - 2x MPB25 Battery External Li-Ion 37V/8.1Ah (576875)
 - 1x MPS21 Power Supply Unit (576873)
 - 2x MCA24 Battery Cable 0.75 m (576876)
 - 2x MSI26 Universal Stand Fixture (576895)
 Empty hard case only. Accessories to be ordered separately.
 Compatibility: AT930, AT960, ATS600</p> |
|  | <p>6009769 MPB25 Battery Set
 The set consists of:
 - 2x MPB25 Battery External Li-Ion (576875)
 Battery Specifications: 37V/8.1Ah/299.7Wh
 - 1x MPS21 Power Supply Unit (576873)
 - 2x MCA24 Battery Cable 0.75 m (576876)
 - 2x MSI26 Universal Stand Fixture (576895)
 - 1x MTC29 Hard Case for MPB25 Batteries (576874)
 Compatibility: AT930, AT960, ATS600</p> |

Cables and Small Electronic Devices

Article	Description
	<p>576886 MCS12 Sensor Cable 10 m 10-metre cable for connecting AT Controller to AT930/960 or ATS Controller to ATS600. Compatibility: AT930, AT960, ATS600</p>
	<p>576887 MCS13 Sensor Cable 30 m 30-metre cable for connecting AT Controller to AT930/960 or ATS Controller to ATS600. Compatibility: AT930, AT960, ATS600</p>
	<p>576888 MCA18 External Temperature Sensor 2 m Accessory for the AT930/960 or ATS600 for measuring external air and/or object temperatures. It connects to the AT Controller or ATS Controller. The temperature sensor is configured with a 2 m cable and has a square 8 x 8 x 42 mm tip with a borehole ø4.2 mm to fix it to the object. Parameters: Temperature range: -20 to +80°C Temperature accuracy: ± 0.3°C Compatibility: AT930, AT960, ATS600</p>

Hexagon's Manufacturing Intelligence division

Leica Absolute Tracker ATS600



576889 MCA19 External Temperature Sensor 10 m
 Accessory for the AT930/960 or ATS600 for measuring external air and/or object temperatures. It connects to the AT Controller or ATS Controller. The temperature sensor is configured with a 10 m cable and has a square 8 x 8 x 42 mm tip with a borehole \varnothing 4.2 mm to fix it to the object.
 Parameters:
 Temperature range: -20 to +80°C
 Temperature accuracy: \pm 0.3°C
 Compatibility: AT930, AT960, ATS600



576890 MCA20 External Temperature Sensor 30 m
 Accessory for the AT930/960 or ATS600 for measuring external air and/or object temperatures. It connects to the AT Controller or ATS Controller. The temperature sensor is configured with a 30 m cable and has a square 8 x 8 x 42 mm tip with a borehole \varnothing 4.2 mm to fix it to the object.
 Parameters:
 Temperature range: -20 to +80°C
 Temperature accuracy: \pm 0.3°C
 Compatibility: AT930, AT960, ATS600



577361 Temperature Probe Holder
 Temperature Probe Holder with magnetic base for object temperature probes of AT40x, 9x0 and 6xx sensor types.



576981 Leica ATS Controller
 Controller compatible with ATS600.
 MPS21 Power Supply Unit (576873) and MSI26 Universal ATC Stand Fixture (576895) must be ordered separately.



576873 MPS21 Power Supply Unit
 Power supply for AT930/960 or ATS600. Connects to AT Controller (576871) or ATS Controller (576981).
 Input 80-264 VAC to output 48 VDC.
 Compatible with AT Controller (576871) and MPB25 Battery External Li-Ion 37V/8.1Ah (576875) and LASC-211 Scanner Controller (576909). For indoor use only.
 Compatibility: AT930, AT960, ATS600



576885 MCS11 Sensor Cable 1.5 m
 Connects AT Controller to AT930/960 or ATS Controller to ATS600.
 Compatibility: AT930, AT960, ATS600



575899 Lan cable RJ-45, 5 m, crossed
 Compatibility: AT403, AT930, AT960, ATS600

Hexagon's Manufacturing Intelligence division

Leica Absolute Tracker ATS600



576956 MCS96 Sensor Cable 1.5 m Elbow
Connects the AT930/960 to the AT Controller or the ATS600 to the ATS Controller. Tracker-side has a 90-degree elbow plug, which enables tracker setup at a minimum height above the mounting surface (e.g. on a machine bed).
Compatibility: AT930, AT960, ATS600



576957 MCS97 Sensor Cable 10 m Elbow
Connects the AT930/960 to the AT Controller or the ATS600 to the ATS Controller. Tracker-side has a 90-degree elbow plug, which enables tracker setup at a minimum height above the mounting surface (e.g. on a machine bed).
Compatibility: AT930, AT960, ATS600



576958 MCS98 Sensor Cable 30 m Elbow
Connects the AT930/960 to the AT Controller or the ATS600 to the ATS Controller. Tracker-side has a 90-degree elbow plug, which enables tracker setup at a minimum height above the mounting surface (e.g. on a machine bed).
Compatibility: AT930, AT960, ATS600

Reflectors



Article **Description**
575784 Red-Ring Reflector (RRR) 1.5",
Corner-cube reflector with removable ring, protective cover for optics and certificate. Delivered in wooden box.

Radius: 19.05 mm ± 0.0025 mm (0.750 in ± 0.0001 in)
Centring of optics: < ± 0.003 mm (< ± 0.00012 in)
Roundness (ball): ≤ 0.003 mm (≤ 0.00012 in)
Acceptance angle: $\pm 30^\circ$
Material ball: Stainless steel, surface-hardened, magnetic
Weight: 170 g (6.00 oz)
Limitations due to ring: none
Compatibility: AT403, AT9x0, ATS600



576241 Red-Ring Reflector 1.5" (RRR), 2-pack
Pack of 2 corner-cube reflectors with removable ring, protective cover for optics and certificate. Delivered in wooden box.

Radius: 19.05 mm ± 0.0025 mm (0.750 in ± 0.0001 in)
Centring of optics: < ± 0.003 mm (< ± 0.00012 in)
Roundness (ball): ≤ 0.003 mm (≤ 0.00012 in)
Acceptance angle: $\pm 30^\circ$
Material ball: Stainless steel, surface-hardened, magnetic
Weight: 170 g (6.00 oz)
Limitations due to ring: none
Compatibility: AT403, AT9x0, ATS600

Hexagon's Manufacturing Intelligence division

Leica Absolute Tracker ATS600



576242 Red-Ring Reflector 1.5" (RRR), 5-pack
Pack of 5 corner-cube reflectors with removable ring, protective cover for optics and certificate. Delivered in wooden box.

Radius: 19.05 mm \pm 0.0025 mm (0.750 in \pm 0.0001 in)
Centring of optics: < \pm 0.003 mm (< \pm 0.00012 in)
Roundness (ball): \leq 0.003 mm (\leq 0.00012 in)
Acceptance angle: \pm 30°
Material ball: Stainless steel, surface-hardened, magnetic
Weight: 170 g (6.00 oz)
Limitations due to ring: none
Compatibility: AT403, AT9x0, ATS600



576243 Red-Ring Reflector 1.5" (RRR), 10-pack
Pack of 10 corner-cube reflectors with removable ring, protective cover for optics and certificate. Delivered in wooden box.

Radius: 19.05 mm \pm 0.0025 mm (0.750 in \pm 0.0001 in)
Centring of optics: < \pm 0.003 mm (< \pm 0.00012 in)
Roundness (ball): \leq 0.003 mm (\leq 0.00012 in)
Acceptance angle: \pm 30°
Material ball: Stainless steel, surface-hardened, magnetic
Weight: 170 g (6.00 oz)
Limitations due to ring: none
Compatibility: AT403, AT9x0, ATS600



576311 Red-Ring Reflector (RRR) 7/8"
Corner-cube reflector with removable ring, protective cover for optics and certificate. Delivered in wooden box.

Radius: 11,1125 mm \pm 0.0025 mm (0.4375 in \pm 0.0001 in)
Centring of optics: < \pm 0.003 mm (\pm 0.00012 in)
Roundness (ball): \leq 0.003 mm (\leq 0.00012 in)
Material (ball): Stainless steel, hardened, magnetic.
Acceptance angle: \pm 30°
Weight: 35 g (1.23 oz)
Limitations due to ring: none
Compatibility: AT403, AT9x0, ATS600



576312 Red-Ring Reflector (RRR) 7/8", 2-pack
Pack of 2 corner-cube reflectors with removable ring, protective cover for optics and certificate. Delivered in wooden box.

Radius: 11,1125 mm \pm 0.0025 mm (0.4375 in \pm 0.0001 in)
Centring of optics: < \pm 0.003 mm (\pm 0.00012 in)
Roundness (ball): \leq 0.003 mm (\leq 0.00012 in)
Material (ball): Stainless steel, hardened, magnetic.
Acceptance angle: \pm 30°
Weight: 35 g (1.23 oz)
Limitations due to ring: none
Compatibility: AT403, AT9x0, ATS600

Hexagon's Manufacturing Intelligence division

Leica Absolute Tracker ATS600



576313 Red-Ring Reflector (RRR) 7/8", 5-pack
Pack of 5 corner-cube reflectors with removable ring, protective cover for optics and certificate. Delivered in wooden box.

Radius: 11.1125 mm \pm 0.0025 mm (0.4375 in \pm 0.0001 in)
Centring of optics: $< \pm$ 0.003 mm (\pm 0.00012 in)
Roundness (ball): \leq 0.003 mm (\leq 0.00012 in)
Material (ball): Stainless steel, hardened, magnetic.
Acceptance angle: \pm 30°
Weight: 35 g (1.23 oz)
Limitations due to ring: none
Compatibility: AT403, AT9x0, ATS600

Hexagon's Manufacturing Intelligence division

Leica Absolute Tracker ATS600



576314 Red-Ring Reflector (RRR) 7/8", 10-pack
Pack of 10 corner-cube reflectors with removable ring, protective cover for optics and certificate. Delivered in wooden box.

Radius: 11.1125 mm \pm 0.0025 mm (0.4375 in \pm 0.0001 in)
Centring of optics: $< \pm$ 0.003 mm (\pm 0.00012 in)
Roundness (ball): \leq 0.003 mm (\leq 0.00012 in)
Material (ball): Stainless steel, hardened, magnetic.
Acceptance angle: $\pm 30^\circ$
Weight: 35 g (1.23 oz)
Limitations due to ring: none
Compatibility: AT403, AT9x0, ATS600



575739 Red-Ring Reflector (RRR) 0.5"
Corner-cube reflector with removable ring, protective cover for optics and certificate. Delivered in wooden box.

Radius: 6.35 mm \pm 0.0025 mm (0.250 in \pm 0.0001 in)
Centring of optics: $< \pm$ 0.003 mm ($< \pm$ 0.00012 in)
Roundness (ball): \leq 0.003 mm (\leq 0.00012 in)
Acceptance angle: $\pm 30^\circ$
Material ball: Stainless steel, surface-hardened, magnetic
Weight: 6 g (0.21 oz)
Limitations due to ring: none
Compatibility: AT403, AT9x0, ATS600



576238 Red-Ring Reflector (RRR) 0.5", 2-pack
Pack of 2 corner-cube reflectors with removable ring, protective cover for optics and certificate. Delivered in wooden box.

Radius: 6.35 mm \pm 0.0025 mm (0.250 in \pm 0.0001 in)
Centring of optics: $< \pm$ 0.003 mm ($< \pm$ 0.00012 in)
Roundness (ball): \leq 0.003 mm (\leq 0.00012 in)
Acceptance angle: $\pm 30^\circ$
Material ball: Stainless steel, surface-hardened, magnetic
Weight: 6 g (0.21 oz)
Limitations due to ring: none
Compatibility: AT403, AT9x0, ATS600



576239 Red-Ring Reflector (RRR) 0.5", 5-pack
Pack of 5 corner-cube reflectors with removable ring, protective cover for optics and certificate. Delivered in wooden box.

Radius: 6.35 mm \pm 0.0025 mm (0.250 in \pm 0.0001 in)
Centring of optics: $< \pm$ 0.003 mm ($< \pm$ 0.00012 in)
Roundness (ball): \leq 0.003 mm (\leq 0.00012 in)
Acceptance angle: $\pm 30^\circ$
Material ball: Stainless steel, surface-hardened, magnetic
Weight: 6 g (0.21 oz)
Limitations due to ring: none
Compatibility: AT403, AT9x0, ATS600

Hexagon's Manufacturing Intelligence division

Leica Absolute Tracker ATS600



576240 Red-Ring Reflector (RRR) 0.5", 10-pack
Pack of 10 corner-cube reflectors with removable ring, protective cover for optics and certificate. Delivered in wooden box.

Radius: 6.35 mm \pm 0.0025 mm (0.250 in \pm 0.0001 in)
Centring of optics: $< \pm$ 0.003 mm ($< \pm$ 0.00012 in)
Roundness (ball): \leq 0.003 mm (\leq 0.00012 in)
Acceptance angle: $\pm 30^\circ$
Material ball: Stainless steel, surface-hardened, magnetic
Weight: 6 g (0.21 oz)
Limitations due to ring: none
Compatibility: AT403, AT9x0, ATS600



575847 Surface Reflector Kit
Kit includes:
- Surface reflector with lanyard
- Pin-Point Stylus (603182)
- 3 mm Ruby-Ball Stylus (603193)
- Edge Stylus (603188/575423)
- Manual (724251)
Compatibility: AT403, AT9x0, ATS600



576401 Mirror Tool
Used to measure distances between 2 points with a laser tracker using only the interferometer. This basic set includes holders for 0.5" and 1.5" reflectors (2 units each, version 576073 and 576096).
This tool can also be used to generate nominal distance values for the planned VDI/VDE standard.
Compatibility: AT403, AT9x0, ATS600

Hexagon's Manufacturing Intelligence division

Leica Absolute Tracker ATS600

Reflector Supports


Article	Description
	<p>576142 Light Duty Magnetic Holder for 0.5" Reflectors Compatibility: AT403, AT9300, AT960, ATS600</p>
	<p>576249 MAT22 Pass Point Target Kit Kit includes: 8 x non-magnetic target base to be affixed with hot glue. 5x neodymium magnetic target base with magnetic shield for transportation and storage. Delivered in case with spare cutout for CCR 1.5" reflector (not included), dimensions 250x200x70 mm, weight with targets 1.1 kg. Compatibility: AT403, AT930, AT960, ATS600</p>
	<p>576850 Magnetic NORS Reflector Support for 1.5" Reflectors (RRR/BRR) Compatibility: AT403, AT930, AT960, ATS600</p>
	<p>576851 Magnetic NORS Reflector Support Kit for 1.5" Reflectors (RRR/BRR), kit of 5 units Compatibility: AT403, AT930, AT960, ATS600</p>
	<p>804011 Magnetic Reflector Support For reflectors in spherical housing, \varnothing 1.5" and bolt hole for TBR with 575497, diameter 12 mm. Compatibility: AT403, AT930, AT960, ATS600</p>
	<p>803728 Magnetic Reflector Support for reflectors in spherical housings, \varnothing 75 mm and bolt hole for TBR with 575497, \varnothing 12 mm. Compatibility: AT403, AT930, AT960, ATS600</p>
	<p>576402 Reflector Mount Can be mounted on a tripod or fix installed at a stable location to establish nominal distances for comparison measurements. To support 0.5" and 1.5" corner-cube reflectors, magnetic reflector holders versions 576073 and 576096 are recommended. Compatibility: AT403, AT930, AT960, ATS600</p>
	<p>577357 AID15 for Inner Diameters Adapter for inner diameters with adjustable magnetic base. Supports 1.5" reflectors only. For diameters 200 mm and larger. M8 thread for adaptation of CFK Extension Rod 650 mm. Compatibility: AT930, AT960, ATS600</p>

Hexagon's Manufacturing Intelligence division

Leica Absolute Tracker ATS600

- | | |
|---|--|
|  | <p>577358 AOD15 for Outer Diameters
 Adapter for outer diameters with adjustable magnetic base. Supports 1.5" reflectors only. Pin feet positions interchangeable for smaller and larger object diameters.
 Compatibility: AT930, AT960, ATS600</p> |
|  | <p>577339 AID78 for Inner Diameters
 Adapter for inner diameters with adjustable magnetic base. Supports 7/8" reflectors only. For diameters 100 mm and larger. M8 thread for adaptation of CFK Extension Rod 650 mm.
 Compatibility: AT930, AT960, ATS600</p> |
|  | <p>577360 CFK Extension Rod 650 mm
 CFK rod extension, 650 mm with M8 m/f thread for adapters AID15/78. Maximum number of recommended segments 3 x 650 mm.
 Compatibility: AT930, AT960, ATS600</p> |
|  | <p>577362 3-Point Reflector Support (3PRS)
 Special accessory with three-point support when probing with a 1.5 in reflector. The 3PRS reflector support will immediately stabilise the reflector position during a measurement process. Lower point RMS and maximum accuracy can be achieved compared to conventional 'hand-held' reflector measurements.
 Compatibility: AT930, AT960, ATS600</p> |

Fieldcheck, Calibration and Recertification

- | Article | Description |
|---|---|
|  | <p>576898 MAT33 Optical Cleaning Kit
 Does away with solvents, harsh cleaning products and messy lens tissues that can leave ugly and problematic smears that ruin measurement quality. Suitable for cleaning AT930/960 or ATS600 sensor optics as well as reflectors.</p> <p>The kit includes:</p> <ul style="list-style-type: none"> - 1x Dust ex blower (167119) - 2x Cleaning Tissues (771349) - 8x Cleaning Swabs, large (758346) - 5x Cotton Swabs, small (724954) - 1x Cleaning Brush (822420) - 1x Cleaning Kit Bag (821236) <p>Compatibility: AT403, AT9x0, ATS600</p> |

Hexagon's Manufacturing Intelligence division

Leica Absolute Tracker ATS600

Cart, Boxes and Cases



Article 576942 **Description** MMC31 Metrology Cart - Modification Kit
 Kit includes:
 - Installation manual
 - Drawer with foam inlay for scanner devices
 - Scanner controller shelf with Velcro tapes for controllers and power supplies
 - Foam inlay for AT930/960 and ATS600 sensors
 - Set of installation material
 The modification kit is compatible with the MMC31 Measurement Metrology Cart (576896) only.
 Compatibility: AT930, AT960, ATS600



576891 MTC51 AT9x0/ATS600 Transport Container
 Able to hold:
 - Absolute Tracker AT9x0 (576861-576865) or
 - ATS600 Absolute Tracker (576971)
 - AT Controller (576871) or ATS Controller (576981)
 - MPS21 Power Supply Unit (576873)
 - MCS11 Sensor Cable 1.5 m (576885)
 - AT Quick Release Mount incl. Mandrel (576338)
 - MCA18 External Temperature Sensor 2 m (576888)
 - Red-Ring Reflector (RRR) 1.5" (575784)
 - MSI26 Universal Stand Fixture (576895)
 - MAT33 Optical Cleaning Kit (576898)
 - Protective Sensor Cover

Empty transport container only. Accessories to be ordered separately.
 Dimensions: L=62.5 cm, W=50 cm, H=36.6 cm (L=24.60", W=19.70", H=14.40")
 Compatibility: AT930, AT960, ATS600

Hexagon's Manufacturing Intelligence division

Leica Absolute Tracker ATS600



576950 MMC91 Absolute Tracker Measurement Cart
 Cart is compatible with AT930/960 or ATS600. Contains a flexible shelf system for installation controllers, UPS and computers. Controller and computer compartment is temperature regulated (built-in fan). Cart can be used like a regular measuring cart or reconfigured to a shuttle cart. Drawers equipped with preconfigured foam inlays for storing AT930/960 or ATS600, scanners, reflectors and reflector supports, as well as Leica T-Probe, styli and extensions. The main cart desktop can be extended with a foldable side-table.
 The cart consists of:
 - Measurement Cart with shelf compartment, drawers and lockable wheels
 - 2 belts with snap hook and quick-connect buckle to fix tracker and/or stands on shuttle rail
 - Power strip (US or EU version)
 - 5 Inlays for drawers
 - Velcro straps for controller and computer fixation
 - USB-fan with USB extension cable
 - Mechanical interface for forklift manipulations
 - Cable Drum
 Cart compartment and drawers are lockable with a key system (2 keys included).
 Dimensions L=1.20 m, W=0.70 m, H=1.10 m.
 Compatibility: AT930, AT960, ATS600



576953 MAM94 Dust Cover
 Cover compatible with the following measurement carts: MMC91 (576950) and MMC31 (576896).
 Compatibility: AT930, AT960, ATS600

Service Products

Product suggestions for CO AFM.
 These products cannot be ordered from the Portable Products and Large-Volume

ATS600

Article	Description
5310323	ATS 600 Platinum Customer Care Package
5310324	ATS 600 Gold Customer Care Package
5310325	ATS 600 Silver Customer Care Package
5310326	ATS 600 Bronze Customer Care Package
5310356	ATS600 Year 2 point of sale Bronze Customer Care Package to Platinum Customer Care Package upgrade
5310357	ATS600 Year 3 point of sale Platinum Customer Care Package
5310358	ATS600 Year 3&4 point of sale Platinum Customer Care Package

Hexagon's Manufacturing Intelligence division

Leica Absolute Tracker ATS600

5310359 ATS600 Year 3,4 & 5 point of sale Platinum Customer Care Package

5309853 AT600 Maintenance and recertification
A full maintenance program that includes:

- Entry inspection
- Maintenance and full system diagnostic check
- Sensor and controller firmware updates
- Full sensor compensation
- Final measurement and performance analysis
- Traceable re-certification to national standard.
- A System inspection status report
- Work performed in an authorised tracker service centre

Excludes:

- Shipping and associated freight costs

Duration 1 to 2 working days

Hexagon's Manufacturing Intelligence division

Leica Absolute Tracker AT960/930

Main Sensors



Article
576861

Description

- Leica Absolute Tracker AT930
3D laser tracker with Absolute Interferometer. Reflector measurement range up to 80 m.
The system consists of:
- 3D laser tracker unit, AT930
 - Calibration Certificate Metrology Gold (827624)
 - MTC51 AT9x0/ATS600 Transport Container (576891)
 - AT Controller (576871)
 - MPS21 Power Supply Unit (576873)
 - MCS11 Sensor Cable 1.5 m (576885)
 - AT Quick Release Mount incl. Mandrel (576338)
 - MCA18 External Temperature Sensor 2 m (576888)
 - Red-Ring Reflector (RRR) 1.5" (575784)
 - MSI26 Universal Stand Fixture (576895)
 - MAT33 Optical Cleaning Kit (576898)
 - Protective Sensor Cover (827057)
 - 24-Month Warranty*

*The 24-month factory warranty period is conditional on the performance of annual maintenance and recertification.



576865

- Leica Absolute Tracker AT960-SR
Short-range 6DoF laser tracker with Absolute Interferometer. Reflector measurement range up to 6 m, with probing range up to 5 m.

- The system consists of:
- 6DoF laser tracker unit AT960-SR
 - Calibration Certificate Metrology Gold (827624)
 - MTC51 AT9x0/ATS600 Transport Container (576891)
 - AT Controller (576871)
 - MPS21 Power Supply Unit (576873)
 - MCS11 Sensor Cable 1.5 m (576885)
 - AT Quick Release Mount incl. Mandrel (576338)
 - MCA18 External Temperature Sensor 2 m (576888)
 - Red-Ring Reflector (RRR) 1.5" (575784)
 - MSI26 Universal Stand Fixture (576895)
 - MAT33 Optical Cleaning Kit (576898)
 - Protective Sensor Cover (827057)
 - 24-Month Warranty*

*The 24-month factory warranty period is conditional on the performance of annual maintenance and recertification.

Hexagon's Manufacturing Intelligence division

Leica Absolute Tracker AT960/930



- 576864 Leica Absolute Tracker AT960-MR
Mid-range 6DoF laser tracker with Absolute Interferometer.
Reflector measurement range up to 20 m, with probing range up to 10 m.

The system consists of:

- 6DoF laser tracker unit AT960-MR
- Calibration Certificate Metrology Gold (827624)
- MTC51 AT9x0/ATS600 Transport Container (576891)
- AT Controller (576871)
- MPS21 Power Supply Unit (576873)
- MCS11 Sensor Cable 1.5 m (576885)
- AT Quick Release Mount incl. Mandrel (576338)
- MCA18 External Temperature Sensor 2 m (576888)
- Red-Ring Reflector (RRR) 1.5" (575784)
- MSI26 Universal Stand Fixture (576895)
- MAT33 Optical Cleaning Kit (576898)
- Protective Sensor Cover (827057)
- 24-Month Warranty*

*The 24-month factory warranty period is conditional on the performance of annual maintenance and recertification.



- 576863 Leica Absolute Tracker AT960-LR
Long-range 6DoF laser tracker with Absolute Interferometer.
Reflector measurement range up to 80 m, with probing range up to 20 m.

The system consists of:

- 6DoF laser tracker unit AT960-LR
- Calibration Certificate Metrology Gold (827624)
- MTC51 AT9x0/ATS600 Transport Container (576891)
- AT Controller (576871)
- MPS21 Power Supply Unit (576873)
- MCS11 Sensor Cable 1.5 m (576885)
- AT Quick Release Mount incl. Mandrel (576338)
- MCA18 External Temperature Sensor 2 m (576888)
- Red-Ring Reflector (RRR) 1.5" (575784)
- MSI26 Universal Stand Fixture (576895)
- MAT33 Optical Cleaning Kit (576898)
- Protective Sensor Cover (827057)
- 24-Month Warranty*

*The 24-month factory warranty period is conditional on the performance of annual maintenance and recertification.

Hexagon's Manufacturing Intelligence division

Leica Absolute Tracker AT960/930



576862 Leica Absolute Tracker AT960-XR
 Extended-range 6DoF laser tracker with Absolute Interferometer.
 Reflector measurement range up to 80 m, with probing range up to 30 m.

The system consists of:

- 6DoF laser tracker unit AT960-XR
- Calibration Certificate Metrology Gold (827624)
- MTC51 AT9x0/ATS600 Transport Container (576891)
- AT Controller (576871)
- MPS21 Power Supply Unit (576873)
- MCS11 Sensor Cable 1.5 m (576885)
- AT Quick Release Mount incl. Mandrel (576338)
- MCA18 External Temperature Sensor 2 m (576888)
- Red-Ring Reflector (RRR) 1.5" (575784)
- MSI26 Universal Stand Fixture (576895)
- MAT33 Optical Cleaning Kit (576898)
- Protective Sensor Cover (827057)
- 24-Month Warranty*

*The 24-month factory warranty period is conditional on the performance of annual maintenance and recertification.



6012677 Leica Absolute Tracker AT960-SR & T-Scan 5
 Leica Absolute Tracker AT960-SR bundled with T-Scan 5.
 Absolute Interferometer Distance range up to 6 m and
 Scanning range up to 5 m.

The system consists of:

- AT960-SR Absolute Tracker (576865)
- T-Scan 5 (576187)



6012678 AT960-SR and LAS
 Short range 6DoF Absolute Tracker system bundled with Leica
 Absolute Scanner LAS laser scanner. Reflector measurement
 range up to 6 m and scanning range up to 5 m.

The system consists of:

- Leica Absolute Tracker AT960-SR (576865)
- Leica Absolute Scanner LAS (576908)



6013319 AT960-SR and LAS-XL
 Short range 6DoF Absolute Tracker system bundled with Leica
 Absolute Scanner LAS-XL laser scanner. Reflector measurement
 range up to 6 m and scanning range up to 5 m.

The system consists of:

- Leica Absolute Tracker AT960-SR (576865)
- Leica Absolute Scanner LAS-XL (576943)

Hexagon's Manufacturing Intelligence division

Leica Absolute Tracker AT960/930

Accessories

Mounting Solutions



Article 576339 **Description**
 AT Magnetic Mount
 Allows for mounting Absolute Tracker systems onto a magnetic surface. Does not include AT Quick Release Mount (576338) and AT Mounting Plate (576336).
 Compatibility: AT930, AT960, ATS600



576349 **AT08 Aluminum Tripod**
 For easy demos, increased portability and reduction of total system weight. Aluminum tripod for Absolute Tracker systems with 3.5" x 8 thread interface. The tripod interface is compatible with the AT Quick Release Mount (576338).

Tripod height (working position): 815 mm (fixed)
 Dimensions: 25 x 25 x 100 cm (folded)
 Weight: 10 kg (without AT Quick Release Mount)
 Special feature: Cable fixation

Notes:
 For best stability and accuracy use of the standard tracker stand and stand extension is recommended. Adapter 577261 from Hubbs required for AT40x sensors.

Compatibility: AT403, AT930, AT960



576940 **MAS80 Wall Mount Fixture 0°/180°**
 Fixture for upright or inverted adaptation of Absolute Tracker systems onto concrete walls or structures. Adaptation of Leica Quick Release for AT930/960 or ATS600, or 5/8" thread for AT40x sensors. Integrated safety lever for Quick Release handle.

Fixture contents:
 - Installation instructions
 - MAS80 Wall Mount
 - Set of screws for adaptation of Quick Release
 - Set of screws, washers and heavy duty anchors for concrete walls
 - Set of cable ties for sensor cables
 - 5/8" threaded bolt for AT40x sensors
 Compatibility: AT930, AT960, ATS600, AT403



576941 **MAS81 Wall Mount Fixture 35°**
 Fixture for inclined installation of AT9x0 sensors onto concrete walls or structures. Adaptation of Leica Quick Release for AT9x0 systems. Integrated safety lever for Quick Release handle.

Fixture Content:
 - Installation instructions
 - MAS81 Wall Mount
 - Set of screws for adaptation of Quick Release
 - Set of screws, washers and heavy duty anchors for concrete walls
 - Set of cable ties for sensor cables
 Compatibility: AT930, AT960

Hexagon's Manufacturing Intelligence division

Leica Absolute Tracker AT960/930



- 575837 Tripod Adapter
To be used for various alignment or compensation measurements. Thread for tripod 5/8". Bore hole 12 mm (supports 577104/577208, not included)
Compatibility: AT403, AT930, AT960, ATS600



- 575483 AT21 Aluminium Tripod
Robust tripod for general use with 5/8" thread. Suitable for Total Stations, theodolites and laser tracker field check equipment.
Instrument height from 1.4 to 2.1 m (4.6 – 6.9 ft), weight 11 kg (24.2 lb).
Compatibility: AT403, AT930, AT960, ATS600



- 575484 AT28 Aluminium Tripod
Robust tripod for general use with adjustable centre column and 5/8" thread. Suitable for Total Stations, theodolites and laser tracker field check equipment. Instrument height from 1.4 to 2.8 m (4.6 - 9.2 ft), weight 12 kg (26.4 lb).
Compatibility: AT403, AT9x0, ATS600



- 576897 MAA32 ATC 19"-Rack Fixture
Designed to hold the AT Controller of the AT9x0 series or ATS Controller of the ATS600 in standard 19"-rack systems.
Compatibility: AT930, AT960, ATS600



- 576895 MSI26 Universal ATC Stand Fixture
Universal stand fixture for AT Controller with reusable Velcro strap (0.52 m).
Compatible with:
- AT Controller (576871, 576368)
- ATS Controller (576981)
- MPB25, Battery external Li-Ion 37V/8.1Ah (576875)
Compatibility: AT403, AT9x0, ATS600



- 576920 MAS71 Power Supply Unit Fixture
Fixture to hold a power supply unit by attaching to the stand, keeping the power supply off the ground. Holds the following power supply units:
- MPS21 Power Supply Unit (576873)
- AC/DC Adapter 15V (773058)

Attaches to the following stands/fixtures:
- MST27 Stand Tube Extension (576881)
- MST36 Portable Metrology Tripod Carbon (576901)
- MSI26 Universal ATC Stand Fixture (576895)
Compatibility: AT403, AT9x0, ATS600



- 576881 MST27 Stand Tube Extension
Designed for AT930/960 or ATS600 systems. Fits on the Absolute Tracker Stand (575997) (to be ordered separately).
Compatibility: AT930, AT960, ATS600

Hexagon's Manufacturing Intelligence division

Leica Absolute Tracker AT960/930



- 575997 Absolute Tracker Stand
Equipped with three levelling screws and shock absorbing wheels.
Compatibility: AT403, AT9x0, ATS600



- 576338 AT Quick Release Mount
For mounting an AT9x0 or AT901 system on the AT Stand Extension (576337), AT Mounting Plate (576336) or any other compatible instrument stand with 3.5"x8 thread adapter.
Compatibility: AT930, AT960, ATS600



- 576336 AT Mounting Plate
Allows for mounting Absolute Tracker systems onto machine beds. Does not include AT Quick Release Mount (576338).
Compatibility: AT930, AT960, ATS600



- 6009768 MST27 Stand Set
Set consists of
- 1x MST27 Stand Tube Extension (576881)
- 1x Absolute Tracker Stand (575997)
Compatibility: AT403, AT930, AT960, ATS600



- 577351 AT Base Plate Type A
Base plate with non-adjustable pointed-tip feet for AT40x, AT9x0 and ATS600 sensor series. Adaptation 5/8" thread and borehole pattern for Quick Release adapter. Quick Release adapter not included. All stainless-steel finish. Plate height approx. 40 mm, weight 9 kg.
Compatibility: AT403, AT930, AT960, ATS600

Hexagon's Manufacturing Intelligence division

Leica Absolute Tracker AT960/930



577352 AT Base Plate Type B
 Base plate with adjustable machine feet for levelling for AT40x, AT9x0 and ATS600 sensor series. Adaptation 5/8" thread and borehole pattern for Quick Release adapter. Type B is delivered with non-slip rubber-type machine feet. Quick Release adapter not included. All stainless-steel finish. Plate height approx. 60 mm. Weight 10 kg.
 Compatibility: AT403, AT930, AT960, ATS600



577353 AT Base Plate Type C
 Base plate with adjustable machine feet for levelling for AT40x, AT9x0 and ATS600 sensor series. Adaptation 5/8" thread and borehole pattern for Quick Release adapter. Type C is delivered with stainless-steel type machine feet. Quick Release adapter not included. All stainless-steel finish. Plate height approx. 60 mm. Weight 10 kg.
 Compatibility: AT403, AT930, AT960, ATS600



577354 AT Base Plate Type D
 Base plate with adjustable machine feet for levelling for AT40x, AT9x0 and ATS600 systems. Adaptation 5/8" thread and borehole pattern for Quick Release adapter. Type D is delivered with pointed-tip feet. Quick Release adapter not included. All stainless-steel finish. Plate height approx. 60 mm. Weight 9.5 kg.
 Compatibility: AT403, AT930, AT960, ATS600



577355 Pointed Screw Kit 80mm for AT Base Plates
 Conversion kit with pointed-tip feet for Base Plate Types B and C. Stainless steel.
 Compatibility: AT403, AT930, AT960, ATS600



576952 MAL93 Levelling Unit
 Used to support the fine levelling process for the Orient-to-Gravity setup. Equipped with two fine-adjust elements (90°-oriented) to adjust the laser tracker's inclination. The MAL93 can be mounted on any compatible instrument stand with a 3.5"x8 thread. The AT Quick Release Mount (576338) is attached to the upper MAL93 interface to fix the laser tracker in place.

Since AT9x0/ATS600 systems feature a dual-axis Orient-to-Gravity sensor, it is possible to setup the tracker with respect to gravity. The Orient-to-Gravity (OTG) process is optional for AT9x0/ATS600 systems, but an oriented-to-gravity configuration is needed for levelling applications.

Compatibility: AT930, AT960, ATS600 (reduced motor servo control loop parameters are required)



575757 Wireless RF Control
 Wireless Radio Frequency Remote Control (2.4GHz), 4 custom programmable buttons, up to 45 m/150ft Range, USB interface, compatible with Windows XP or higher (32bit/64bit).
 Compatibility: AT403, AT9x0, ATS600

Hexagon's Manufacturing Intelligence division

Leica Absolute Tracker AT960/930



- 575965 Wireless Infrared Remote Control,
4 custom programmable buttons, up to 20 m/65ft range,
USB interface, compatible with Windows XP or higher
(32bit/64bit).
Compatibility: AT403, AT9x0, ATS600

Batteries



- | Article | Description |
|---------|--|
| 576875 | MPB25 Battery External Li-Ion 37V/8.1Ah
External chargeable li-ion battery for AT930/960 or ATS600 systems. Connects to the AT Controller. Built-in charging technology. To charge the battery, the MPS21 Power Supply Unit (576873) is required (to be ordered separately). To mount the battery on a stand/tripod the MSI26 Universal ATC Stand Fixture (576895) must be ordered separately.
Battery Specifications: 37 V /8.1 Ah /299 Wh
Compatibility: AT930, AT960, ATS600 |



- | | |
|--------|--|
| 576876 | MCA24 Battery Cable 0.75 m
Battery cable supports two use cases.
1) Connects MPB25 battery to the AT Controller of the AT930/960 or ATS Controller of the ATS600.
2) Connects 2 MPB25 batteries in a daisy-chain charging setup.
Compatibility: AT930, AT960, ATS600 |
|--------|--|



- | | |
|--------|--|
| 576874 | MTC29 Hard Case for MPB25 Batteries
Hard battery case that can hold:
- 2x MPB25 Battery External Li-Ion 37V/8.1Ah (576875)
- 1x MPS21 Power Supply Unit (576873)
- 2x MCA24 Battery Cable 0.75 m (576876)
- 2x MSI26 Universal Stand Fixture (576895)
Empty hard case only. Accessories to be ordered separately.
Compatibility: AT930, AT960, ATS600 |
|--------|--|



- | | |
|---------|---|
| 6009769 | MPB25 Battery Set
The set consists of:
- 2x MPB25 Battery External Li-Ion (576875)
Battery Specifications: 37V/8.1Ah/299.7Wh
- 1x MPS21 Power Supply Unit (576873)
- 2x MCA24 Battery Cable 0.75 m (576876)
- 2x MSI26 Universal Stand Fixture (576895)
- 1x MTC29 Hard Case for MPB25 Batteries (576874)
Compatibility: AT930, AT960, ATS600 |
|---------|---|

Hexagon's Manufacturing Intelligence division

Leica Absolute Tracker AT960/930

Cables and Small Electronic Devices

Article	Description
	<p>576886 MCS12 Sensor Cable 10 m 10-metre cable for connecting AT Controller to AT930/960 or ATS Controller to ATS600. Compatibility: AT930, AT960, ATS600</p>
	<p>576887 MCS13 Sensor Cable 30 m 30-metre cable for connecting AT Controller to AT930/960 or ATS Controller to ATS600. Compatibility: AT930, AT960, ATS600</p>
	<p>576888 MCA18 External Temperature Sensor 2 m Accessory for the AT930/960 or ATS600 for measuring external air and/or object temperatures. It connects to the AT Controller or ATS Controller. The temperature sensor is configured with a 2 m cable and has a square 8 x 8 x 42 mm tip with a borehole \varnothing4.2 mm to fix it to the object. Parameters: Temperature range: -20 to +80°C Temperature accuracy: \pm 0.3°C Compatibility: AT930, AT960, ATS600</p>
	<p>576889 MCA19 External Temperature Sensor 10 m Accessory for the AT930/960 or ATS600 for measuring external air and/or object temperatures. It connects to the AT Controller or ATS Controller. The temperature sensor is configured with a 10 m cable and has a square 8 x 8 x 42 mm tip with a borehole \varnothing4.2 mm to fix it to the object. Parameters: Temperature range: -20 to +80°C Temperature accuracy: \pm 0.3°C Compatibility: AT930, AT960, ATS600</p>
	<p>576890 MCA20 External Temperature Sensor 30 m Accessory for the AT930/960 or ATS600 for measuring external air and/or object temperatures. It connects to the AT Controller or ATS Controller. The temperature sensor is configured with a 30 m cable and has a square 8 x 8 x 42 mm tip with a borehole \varnothing4.2 mm to fix it to the object. Parameters: Temperature range: -20 to +80°C Temperature accuracy: \pm 0.3°C Compatibility: AT930, AT960, ATS600</p>
	<p>577361 Temperature Probe Holder Temperature Probe Holder with magnetic base for object temperature probes of AT40x, 9x0 and 6xx sensor types.</p>

Hexagon's Manufacturing Intelligence division

Leica Absolute Tracker AT960/930



576871 AT Controller
 The AT Controller is compatible with Leica Absolute Tracker AT930/AT960 series.
 The 576873 MPS21 Power Supply Unit and 576895 MSI26, Universal ATC Stand Fixture has to be ordered separately.



576873 MPS21 Power Supply Unit
 Power supply for AT930/960 or ATS600. Connects to AT Controller (576871) or ATS Controller (576981).
 Input 80-264 VAC to output 48 VDC.
 Compatible with AT Controller (576871) and MPB25 Battery External Li-Ion 37V/8.1Ah (576875) and LASC-211 Scanner Controller (576909). For indoor use only.
 Compatibility: AT930, AT960, ATS600



576885 MCS11 Sensor Cable 1.5 m
 Connects AT Controller to AT930/960 or ATS Controller to ATS600.
 Compatibility: AT930, AT960, ATS600



575899 Lan cable RJ-45, 5 m, crossed
 Compatibility: AT403, AT930, AT960, ATS600



576956 MCS96 Sensor Cable 1.5 m Elbow
 Connects the AT930/960 to the AT Controller or the ATS600 to the ATS Controller. Tracker-side has a 90-degree elbow plug, which enables tracker setup at a minimum height above the mounting surface (e.g. on a machine bed).
 Compatibility: AT930, AT960, ATS600



576957 MCS97 Sensor Cable 10 m Elbow
 Connects the AT930/960 to the AT Controller or the ATS600 to the ATS Controller. Tracker-side has a 90-degree elbow plug, which enables tracker setup at a minimum height above the mounting surface (e.g. on a machine bed).
 Compatibility: AT930, AT960, ATS600



576958 MCS98 Sensor Cable 30 m Elbow
 Connects the AT930/960 to the AT Controller or the ATS600 to the ATS Controller. Tracker-side has a 90-degree elbow plug, which enables tracker setup at a minimum height above the mounting surface (e.g. on a machine bed).
 Compatibility: AT930, AT960, ATS600

Hexagon's Manufacturing Intelligence division

Leica Absolute Tracker AT960/930

Reflectors



Article 575784 **Description** Red-Ring Reflector (RRR) 1.5",
Corner-cube reflector with removable ring, protective cover for optics and certificate. Delivered in wooden box.

Radius: 19.05 mm ± 0.0025 mm (0.750 in ± 0.0001 in)
 Centring of optics: $< \pm 0.003$ mm ($< \pm 0.00012$ in)
 Roundness (ball): ≤ 0.003 mm (≤ 0.00012 in)
 Acceptance angle: $\pm 30^\circ$
 Material ball: Stainless steel, surface-hardened, magnetic
 Weight: 170 g (6.00 oz)
 Limitations due to ring: none
 Compatibility: AT403, AT9x0, ATS600



Article 576241 **Description** Red-Ring Reflector 1.5" (RRR), 2-pack
Pack of 2 corner-cube reflectors with removable ring, protective cover for optics and certificate. Delivered in wooden box.

Radius: 19.05 mm ± 0.0025 mm (0.750 in ± 0.0001 in)
 Centring of optics: $< \pm 0.003$ mm ($< \pm 0.00012$ in)
 Roundness (ball): ≤ 0.003 mm (≤ 0.00012 in)
 Acceptance angle: $\pm 30^\circ$
 Material ball: Stainless steel, surface-hardened, magnetic
 Weight: 170 g (6.00 oz)
 Limitations due to ring: none
 Compatibility: AT403, AT9x0, ATS600



Article 576242 **Description** Red-Ring Reflector 1.5" (RRR), 5-pack
Pack of 5 corner-cube reflectors with removable ring, protective cover for optics and certificate. Delivered in wooden box.

Radius: 19.05 mm ± 0.0025 mm (0.750 in ± 0.0001 in)
 Centring of optics: $< \pm 0.003$ mm ($< \pm 0.00012$ in)
 Roundness (ball): ≤ 0.003 mm (≤ 0.00012 in)
 Acceptance angle: $\pm 30^\circ$
 Material ball: Stainless steel, surface-hardened, magnetic
 Weight: 170 g (6.00 oz)
 Limitations due to ring: none
 Compatibility: AT403, AT9x0, ATS600

Hexagon's Manufacturing Intelligence division

Leica Absolute Tracker AT960/930



576243 Red-Ring Reflector 1.5" (RRR), 10-pack
Pack of 10 corner-cube reflectors with removable ring, protective cover for optics and certificate. Delivered in wooden box.

Radius: 19.05 mm \pm 0.0025 mm (0.750 in \pm 0.0001 in)
Centring of optics: < \pm 0.003 mm (< \pm 0.00012 in)
Roundness (ball): \leq 0.003 mm (\leq 0.00012 in)
Acceptance angle: \pm 30°
Material ball: Stainless steel, surface-hardened, magnetic
Weight: 170 g (6.00 oz)
Limitations due to ring: none
Compatibility: AT403, AT9x0, ATS600



576244 Break Resistant Reflector 1.5" (BRR)
Reflector with collar protection cover for optics and certificate. Delivered in wooden box.

Radius: 19.05 mm \pm 0.0025 mm (0.7500 in \pm 0.00010 in)
Centring of optics: < \pm 0.010 mm (< \pm 0.0004 in)
Roundness (ball) < \pm 0.0015 mm (< \pm 0.00006 in)
Acceptance angle: < \pm 30°
Material ball: Stainless steel, surface-hardened, magnetic
Weight: 195 g (6.88 oz)
Limitations due to collar: none
Compatibility: AT403, AT9x0



576311 Red-Ring Reflector (RRR) 7/8"
Corner-cube reflector with removable ring, protective cover for optics and certificate. Delivered in wooden box.

Radius: 11,1125 mm \pm 0.0025 mm (0.4375 in \pm 0.0001 in)
Centring of optics: < \pm 0.003 mm (< \pm 0.00012 in)
Roundness (ball): \leq 0.003 mm (\leq 0.00012 in)
Material (ball): Stainless steel, hardened, magnetic.
Acceptance angle: \pm 30°
Weight: 35 g (1.23 oz)
Limitations due to ring: none
Compatibility: AT403, AT9x0, ATS600



576312 Red-Ring Reflector (RRR) 7/8", 2-pack
Pack of 2 corner-cube reflectors with removable ring, protective cover for optics and certificate. Delivered in wooden box.

Radius: 11,1125 mm \pm 0.0025 mm (0.4375 in \pm 0.0001 in)
Centring of optics: < \pm 0.003 mm (< \pm 0.00012 in)
Roundness (ball): \leq 0.003 mm (\leq 0.00012 in)
Material (ball): Stainless steel, hardened, magnetic.
Acceptance angle: \pm 30°
Weight: 35 g (1.23 oz)
Limitations due to ring: none
Compatibility: AT403, AT9x0, ATS600

Hexagon's Manufacturing Intelligence division

Leica Absolute Tracker AT960/930



576313 Red-Ring Reflector (RRR) 7/8", 5-pack
Pack of 5 corner-cube reflectors with removable ring, protective cover for optics and certificate. Delivered in wooden box.

Radius: 11.1125 mm \pm 0.0025 mm (0.4375 in \pm 0.0001 in)
Centring of optics: $< \pm$ 0.003 mm (\pm 0.00012 in)
Roundness (ball): \leq 0.003 mm (\leq 0.00012 in)
Material (ball): Stainless steel, hardened, magnetic.
Acceptance angle: $\pm 30^\circ$
Weight: 35 g (1.23 oz)
Limitations due to ring: none
Compatibility: AT403, AT9x0, ATS600



576314 Red-Ring Reflector (RRR) 7/8", 10-pack
Pack of 10 corner-cube reflectors with removable ring, protective cover for optics and certificate. Delivered in wooden box.

Radius: 11.1125 mm \pm 0.0025 mm (0.4375 in \pm 0.0001 in)
Centring of optics: $< \pm$ 0.003 mm (\pm 0.00012 in)
Roundness (ball): \leq 0.003 mm (\leq 0.00012 in)
Material (ball): Stainless steel, hardened, magnetic.
Acceptance angle: $\pm 30^\circ$
Weight: 35 g (1.23 oz)
Limitations due to ring: none
Compatibility: AT403, AT9x0, ATS600



575739 Red-Ring Reflector (RRR) 0.5"
Corner-cube reflector with removable ring, protective cover for optics and certificate. Delivered in wooden box.

Radius: 6.35 mm \pm 0.0025 mm (0.250 in \pm 0.0001 in)
Centring of optics: $< \pm$ 0.003 mm ($< \pm$ 0.00012 in)
Roundness (ball): \leq 0.003 mm (\leq 0.00012 in)
Acceptance angle: $\pm 30^\circ$
Material ball: Stainless steel, surface-hardened, magnetic
Weight: 6 g (0.21 oz)
Limitations due to ring: none
Compatibility: AT403, AT9x0, ATS600



576238 Red-Ring Reflector (RRR) 0.5", 2-pack
Pack of 2 corner-cube reflectors with removable ring, protective cover for optics and certificate. Delivered in wooden box.

Radius: 6.35 mm \pm 0.0025 mm (0.250 in \pm 0.0001 in)
Centring of optics: $< \pm$ 0.003 mm ($< \pm$ 0.00012 in)
Roundness (ball): \leq 0.003 mm (\leq 0.00012 in)
Acceptance angle: $\pm 30^\circ$
Material ball: Stainless steel, surface-hardened, magnetic
Weight: 6 g (0.21 oz)
Limitations due to ring: none
Compatibility: AT403, AT9x0, ATS600

Hexagon's Manufacturing Intelligence division

Leica Absolute Tracker AT960/930



576239 Red-Ring Reflector (RRR) 0.5", 5-pack
Pack of 5 corner-cube reflectors with removable ring, protective cover for optics and certificate. Delivered in wooden box.

Radius: 6.35 mm \pm 0.0025 mm (0.250 in \pm 0.0001 in)
Centring of optics: $< \pm$ 0.003 mm ($< \pm$ 0.00012 in)
Roundness (ball): \leq 0.003 mm (\leq 0.00012 in)
Acceptance angle: $\pm 30^\circ$
Material ball: Stainless steel, surface-hardened, magnetic
Weight: 6 g (0.21 oz)
Limitations due to ring: none
Compatibility: AT403, AT9x0, ATS600



576240 Red-Ring Reflector (RRR) 0.5", 10-pack
Pack of 10 corner-cube reflectors with removable ring, protective cover for optics and certificate. Delivered in wooden box.

Radius: 6.35 mm \pm 0.0025 mm (0.250 in \pm 0.0001 in)
Centring of optics: $< \pm$ 0.003 mm ($< \pm$ 0.00012 in)
Roundness (ball): \leq 0.003 mm (\leq 0.00012 in)
Acceptance angle: $\pm 30^\circ$
Material ball: Stainless steel, surface-hardened, magnetic
Weight: 6 g (0.21 oz)
Limitations due to ring: none
Compatibility: AT403, AT9x0, ATS600



576234 Tooling Ball Reflector 0.5" (TBR)
Glass prism reflector with removable ring, protection cover for optics and certificate. Delivered in a wooden box.

Radius: 6.35mm: \pm 0.004mm (0.250in \pm 0.00016in)
Centring of optics: $< \pm$ 0.01mm ($< \pm$ 0.00039in)
Roundness (ball): $< \pm$ 0.003mm ($< \pm$ 0.00012in)
Acceptance angle: with ring $\leq \pm 22^\circ$; without ring $\leq \pm 50^\circ$
Material ball: Stainless steel, surface-hardened, magnetic
Weight: 7 g (0.25oz)
Compatibility: AT403, AT9x0



576235 Tooling Ball Reflector 0.5" (TBR), 5-pack
Pack of 5 glass prism reflectors with removable ring, protection cover for optics and certificate. Delivered in a wooden box.

Radius: 6.35mm: \pm 0.004mm (0.250in \pm 0.00016in)
Centring of optics: $< \pm$ 0.01mm ($< \pm$ 0.00039in)
Roundness (ball): $< \pm$ 0.003mm ($< \pm$ 0.00012in)
Acceptance angle: with ring $\leq \pm 22^\circ$; without ring $\leq \pm 50^\circ$
Material ball: Stainless steel, surface-hardened, magnetic
Weight: 7 g (0.25oz)
Compatibility: AT403, AT9x0

Hexagon's Manufacturing Intelligence division

Leica Absolute Tracker AT960/930



576236 Tooling Ball Reflector 0.5" (TBR), 10-pack
Pack of 10 glass prism reflectors with removable ring, protection cover for optics and certificate. Delivered in a wooden box.

Radius: 6.35mm: $\pm 0.004\text{mm}$ (0.2500in $\pm 0.00016\text{in}$)
Centring of optics: $< \pm 0.01\text{mm}$ ($< \pm 0.00039\text{in}$)
Roundness (ball): $< \pm 0.003\text{mm}$ ($< \pm 0.00012\text{in}$)
Acceptance angle: with ring $\leq \pm 22^\circ$; without ring $\leq \pm 50^\circ$
Material ball: Stainless steel, surface-hardened, magnetic
Weight: 7 g (0.25oz)
Compatibility: AT403, AT9x0



575848 Reflectors for Fixed Installation 0.5" (RFI), 5-pack.
Pack of 5 glass prism reflectors in a wooden box.

Radius: 6.35 mm (0.2500 in)
Centring of optics: not applicable
Roundness (ball): not applicable
Acceptance angle: $\leq \pm 50^\circ$
Material ball: Anodized aluminum, none magnetic
Weight: 3 g (0.11 oz)
Compatibility: AT403, AT9x0



576246 Reflectors for Fixed Installation 0.5" (RFI), 10-pack.
Pack of 10 glass prism reflectors in a wooden box.

Radius: 6.35 mm (0.2500 in)
Centring of optics: not applicable
Roundness (ball): not applicable
Acceptance angle: $\leq \pm 50^\circ$
Material ball: Anodized aluminum, none magnetic
Weight: 3 g (0.11 oz)
Compatibility: AT403, AT9x0



575847 Surface Reflector Kit
Kit includes:
- Surface reflector with lanyard
- Pin-Point Stylus (603182)
- 3 mm Ruby-Ball Stylus (603193)
- Edge Stylus (603188/575423)
- Manual (724251)
Compatibility: AT403, AT9x0, ATS600

Hexagon's Manufacturing Intelligence division

Leica Absolute Tracker AT960/930



- 576921 MAV72 Sensor Aperture
Redirects air movements around sensor optics to improve measurement data quality.
Compatibility: AT960



- 576401 Mirror Tool
Used to measure distances between 2 points with a laser tracker using only the interferometer. This basic set includes holders for 0.5" and 1.5" reflectors (2 units each, version 576073 and 576096).
This tool can also be used to generate nominal distance values for the planned VDI/VDE standard.
Compatibility: AT403, AT9x0, ATS600



- 576962 Super CatEye Reflector (SCE)
Reflector with ultra-wide acceptance angle of $\pm 75^\circ$ from vertical around a full 360-degree field of view. Includes reflector with optical protection cover, certificate and product storage box. The SCE is compatible with Leica Absolute Tracker AT9x0 systems.

Radius: 19.05 mm ± 0.0025 mm (0.750 in ± 0.0001 in)
Centring of optics: $< \pm 0.005$ mm ($< \pm 0.00020$ in)
Roundness (ball): ≤ 0.003 mm (≤ 0.00012 in)
Acceptance angle: $\pm 75^\circ$
Material (ball): stainless steel, surface-hardened, magnetic
Weight 106 g (3.74 oz)
Compatibility: AT9x0

Reflector Supports



- Article** **Description**
576142 Light Duty Magnetic Holder for 0.5" Reflectors
Compatibility: AT403, AT9300, AT960, ATS600



- 576249 MAT22 Pass Point Target Kit
Kit includes:
8 x non-magnetic target base to be affixed with hot glue.
5x neodymium magnetic target base with magnetic shield for transportation and storage.
Delivered in case with spare cutout for CCR 1.5" reflector (not included), dimensions 250x200x70 mm, weight with targets 1.1 kg.
Compatibility: AT403, AT930, AT960, ATS600



- 576850 Magnetic NORS Reflector Support for 1.5" Reflectors (RRR/BRR)
Compatibility: AT403, AT930, AT960, ATS600

Hexagon's Manufacturing Intelligence division

Leica Absolute Tracker AT960/930



576851 Magnetic NORS Reflector Support Kit for 1.5" Reflectors (RRR/BRR), kit of 5 units
Compatibility: AT403, AT930, AT960, ATS600



804011 Magnetic Reflector Support
For reflectors in spherical housing, \varnothing 1.5" and bolt hole for TBR with 575497, diameter 12 mm.
Compatibility: AT403, AT930, AT960, ATS600



803728 Magnetic Reflector Support
for reflectors in spherical housings, \varnothing 75 mm and bolt hole for TBR with 575497, \varnothing 12 mm.
Compatibility: AT403, AT930, AT960, ATS600



576401 Mirror Tool
Used to measure distances between 2 points with a laser tracker using only the interferometer. This basic set includes holders for 0.5" and 1.5" reflectors (2 units each, version 576073 and 576096).
This tool can also be used to generate nominal distance values for the planned VDI/VDE standard.
Compatibility: AT403, AT9x0, ATS600



576402 Reflector Mount
Can be mounted on a tripod or fix installed at a stable location to establish nominal distances for comparison measurements. To support 0.5" and 1.5" corner-cube reflectors, magnetic reflector holders versions 576073 and 576096 are recommended.
Compatibility: AT403, AT930, AT960, ATS600



577357 AID15 for Inner Diameters
Adapter for inner diameters with adjustable magnetic base. Supports 1.5" reflectors only. For diameters 200 mm and larger. M8 thread for adaptation of CFK Extension Rod 650 mm.
Compatibility: AT930, AT960, ATS600



577358 AOD15 for Outer Diameters
Adapter for outer diameters with adjustable magnetic base. Supports 1.5" reflectors only. Pin feet positions interchangeable for smaller and larger object diameters.
Compatibility: AT930, AT960, ATS600



577339 AID78 for Inner Diameters
Adapter for inner diameters with adjustable magnetic base. Supports 7/8" reflectors only. For diameters 100 mm and larger. M8 thread for adaptation of CFK Extension Rod 650 mm.
Compatibility: AT930, AT960, ATS600



577360 CFK Extension Rod 650 mm
CFK rod extension, 650 mm with M8 m/f thread for adapters AID15/78. Maximum number of recommended segments 3 x 650 mm.
Compatibility: AT930, AT960, ATS600

Hexagon's Manufacturing Intelligence division

Leica Absolute Tracker AT960/930



- 577362 3-Point Reflector Support (3PRS)
 Special accessory with three-point support when probing with a 1.5 in reflector. The 3PRS reflector support will immediately stabilise the reflector position during a measurement process. Lower point RMS and maximum accuracy can be achieved compared to conventional 'hand-held' reflector measurements.
 Compatibility: AT930, AT960, ATS600

Fieldcheck, Calibration and Recertification



- Article** 576894 **Description** MAC23 6DoF Compensation Kit
 For on-site compensations of the integrated 3D and 6DoF Absolute Tracker system components. Consists of tripod interface (5/8" thread), compensation frame and light-duty magnetic holder for tooling ball reflectors 0.5". For the process a Red-Ring Reflector 0.5" (575739) is required (not included).
 Compatibility: AT403, AT930, AT960



- 576898 MAT33 Optical Cleaning Kit
 Does away with solvents, harsh cleaning products and messy lens tissues that can leave ugly and problematic smears that ruin measurement quality. Suitable for cleaning AT930/960 or ATS600 sensor optics as well as reflectors.

The kit includes:

- 1x Dust ex blower (167119)
- 2x Cleaning Tissues (771349)
- 8x Cleaning Swabs, large (758346)
- 5x Cotton Swabs, small (724954)
- 1x Cleaning Brush (822420)
- 1x Cleaning Kit Bag (821236)

Compatibility: AT403, AT9x0, ATS600

Cart, Boxes and Cases



- Article** 576942 **Description** MMC31 Metrology Cart - Modification Kit
 Kit includes:
- Installation manual
 - Drawer with foam inlay for scanner devices
 - Scanner controller shelf with Velcro tapes for controllers and power supplies
 - Foam inlay for AT930/960 and ATS600 sensors
 - Set of installation material
- The modification kit is compatible with the MMC31 Measurement Metrology Cart (576896) only.
 Compatibility: AT930, AT960, ATS600

Hexagon's Manufacturing Intelligence division

Leica Absolute Tracker AT960/930



- 576891 MTC51 AT9x0/ATS600 Transport Container
- Able to hold:
- Absolute Tracker AT9x0 (576861-576865) or
 - ATS600 Absolute Tracker (576971)
 - AT Controller (576871) or ATS Controller (576981)
 - MPS21 Power Supply Unit (576873)
 - MCS11 Sensor Cable 1.5 m (576885)
 - AT Quick Release Mount incl. Mandrel (576338)
 - MCA18 External Temperature Sensor 2 m (576888)
 - Red-Ring Reflector (RRR) 1.5" (575784)
 - MSI26 Universal Stand Fixture (576895)
 - MAT33 Optical Cleaning Kit (576898)
 - Protective Sensor Cover

Empty transport container only. Accessories to be ordered separately.

Dimensions: L=62.5 cm, W=50 cm, H=36.6 cm (L=24.60", W=19.70", H=14.40")

Compatibility: AT930, AT960, ATS600



- 576950 MMC91 Absolute Tracker Measurement Cart
- Cart is compatible with AT930/960 or ATS600. Contains a flexible shelf system for installation controllers, UPS and computers. Controller and computer compartment is temperature regulated (built-in fan). Cart can be used like a regular measuring cart or reconfigured to a shuttle cart. Drawers equipped with preconfigured foam inlays for storing AT930/960 or ATS600, scanners, reflectors and reflector supports, as well as Leica T-Probe, styli and extensions. The main cart desktop can be extended with a foldable side-table.

The cart consists of:

- Measurement Cart with shelf compartment, drawers and lockable wheels
- 2 belts with snap hook and quick-connect buckle to fix tracker and/or stands on shuttle rail
- Power strip (US or EU version)
- 5 Inlays for drawers
- Velcro straps for controller and computer fixation
- USB-fan with USB extension cable
- Mechanical interface for forklift manipulations
- Cable Drum

Cart compartment and drawers are lockable with a key system (2 keys included).

Dimensions L=1.20 m, W=0.70 m, H=1.10 m.

Compatibility: AT930, AT960, ATS600



- 576953 MAM94 Dust Cover
- Cover compatible with the following measurement carts: MMC91 (576950) and MMC31 (576896).
- Compatibility: AT930, AT960, ATS600

Hexagon's Manufacturing Intelligence division

Leica Absolute Tracker AT960/930

Service Products

Product suggestions for CO AFM.

These products cannot be ordered from the Portable Products and Large-Volume

AT960/930

Article	Description
5310327	AT930 Platinum Customer Care Package
5310328	AT930 Gold Customer Care Package
5310329	AT930 Silver Customer Care Package
5310330	AT930 Bronze Customer Care Package
5310360	AT930 Year 2 point of sale Bronze Customer Care Package to Platinum Customer Care Package upgrade
5310361	AT930 Year 3 point of sale Platinum Customer Care Package
5310362	AT930 Year 3&4 point of sale Platinum Customer Care Package
5310363	AT930 Year 3,4 & 5 point of sale Platinum Customer Care Package
5306441	<p>AT930 Maintenance and recertification</p> <p>A full maintenance program that includes:</p> <ul style="list-style-type: none"> - Entry inspection - Maintenance and full system diagnostic check - Sensor and controller firmware updates - Full sensor compensation - Final measurement and performance analysis - Traceable re-certification to national standard. - A System inspection status report - Work performed in an authorised tracker service centre <p>Excludes:</p> <ul style="list-style-type: none"> - Shipping and associated freight costs <p>Duration 1 to 2 working days</p>
5306983	<p>AT930 Stand-by System Option</p> <p>Available as a replacement unit whilst your system is in service. System comprises of a sensor, Controller & Cables.</p> <p>Available for shipment during standard working hours after fault diagnoses or upon scheduling prior to routine maintenance.</p>
5310331	AT960 Probing Platinum Customer Care Package
5310332	AT960 Probing Gold Customer Care Package
5310333	AT960 Probing Silver Customer Care Package
5310334	AT960 Probing Bronze Customer Care Package

Hexagon's Manufacturing Intelligence division

Leica Absolute Tracker AT960/930

- 5310364 AT960 Probing Year 2 point of sale Bronze Customer Care Package to Platinum Customer Care Package upgrade
- 5310365 AT960 Probing Year 3 point of sale Platinum Customer Care Package
- 5310366 AT960 Probing Year 3&4 point of sale Platinum Customer Care Package
- 5310367 AT960 Probing Year 3,4 & 5 point of sale Platinum Customer Care Package
- 5310335 AT960 Probe & Scan Platinum Customer Care Package
- 5310336 AT960 Probe & Scan Gold Customer Care Package
- 5310337 AT960 Probe & Scan Silver Customer Care Package
- 5310338 AT960 Probe & Scan Bronze Customer Care Package
- 5310368 AT960 Probe & Scan Year 2 point of sale Bronze Customer Care Package to Platinum Customer Care Package upgrade
- 5310370 AT960 Probe & Scan Year 3 point of sale Platinum Customer Care Package
- 5310371 AT960 Probe & Scan Year 3&4 point of sale Platinum Customer Care Package
- 5310372 AT960 Probe & Scan Year 3,4 & 5 point of sale Platinum Customer Care Package
- 5306442 AT960 Maintenance and recertification - Sensor and Probe
A full maintenance program that Includes:
 - Entry inspection
 - Maintenance and full system diagnostic check
 - Sensor and controller firmware updates
 - Full 3D and 6D sensor compensation
 - Probe compensation
 - Final measurement and performance analysis
 - Traceable re-certification to national standard
 - A System inspection status report
 - Work performed in an authorised tracker service centreExcludes:
 - Shipping and associated freight costsDuration 2 days working days

Hexagon's Manufacturing Intelligence division

Leica Absolute Tracker AT960/930

- 5306443 AT960 Maintenance and recertification - Sensor, Probe and T-Scan
A full maintenance program that Includes:
- Entry inspection
- Maintenance and full system diagnostic check
- Sensor and controller firmware updates
- Full 3D and 6D sensor compensation
- Probe and T-Scan compensation
- Final measurement and performance analysis
- Traceable re-certification to national standard
- A System inspection status report
- Work performed in an authorised tracker service centre
Excludes:
- Shipping and associated freight costs
Duration 2 - 3 working days
- 5306985 AT960 Stand-by System Option Probing
Available as a replacement unit whilst your system is in service. System comprises of a sensor, including one T-Probe, controller & cables.
Available for shipment during standard working hours after fault diagnoses or upon scheduling prior to routine maintenance.
- 5306986 AT960 Stand-by System Option Scanning
Available as a replacement unit whilst your system is in service. System comprises of a sensor, including one T-Probe one T-Scan, controller & cables.
Available for shipment during standard working hours after fault diagnoses or upon scheduling prior to routine maintenance.

Hexagon's Manufacturing Intelligence division

Leica Absolute Scanner LAS and LAS-XL

Leica Absolute Scanner



Article	Description
576908	<p>Leica Absolute Scanner LAS 3D laser line scanner for AT960 systems. System consists of:</p> <ul style="list-style-type: none"> - 3D laser scanner unit LAS - LASC-211 Scanner Controller (576909) - MCA62 Scanner Sensor Cable, 10 m (576911) - MPS21 Power Supply Unit (576873) - LAN-cable RJ-45, 5 m (575899) - MCA47 T-Scan Trigger/Probe Cable 2 m (576903) - MAC64 Reference Sphere d=30 mm (576913) - MAC74 Reference Sphere Support (576923) - MAP65 Horizontal Holder (576914) - MTC61 LAS Transport Case (576910) <p>Compatibility: AT960</p>



576943	<p>Leica Absolute Scanner LAS-XL Large-scale 3D laser line scanner for AT960 systems. System consists of:</p> <ul style="list-style-type: none"> - 3D laser scanner unit LAS-XL - LASC-211 Scanner Controller (576909) - MCA63 Scanner Sensor Cable, 20 m (576912) - MPS21 Power Supply Unit (576873) - LAN-cable RJ-45, 5 m (575899) - MCA47 T-Scan Trigger/Probe Cable 2 m (576903) - MAC87 Reference Sphere d=90 mm (576947) - MAP65 Horizontal Scanner Holder (576914) - MTC85 LAS-XL Trolley Case (576944) <p>Compatibility: AT960</p>
--------	--



576955	<p>Absolute Scanner Bundle (LAS + LAS-XL) Pair of complementary 3D laser line scanners for AT960 systems. Bundle consists of:</p> <ul style="list-style-type: none"> - Leica Absolute Scanner LAS (576908) - Leica Absolute Scanner LAS-XL (576943) - LASC-211 Scanner Controller (576909) - MCA63 Scanner Sensor Cable, 20 m (576912) - MPS21 Power Supply Unit (576873) - LAN-cable RJ-45, 5 m (575899) - MCA47 T-Scan Trigger/Probe Cable 2 m (576903) - MAC87 Reference Sphere d=90 mm (576947) - 2x MAP65 Horizontal Scanner Holder (576914) - MAC64 Reference Sphere d=30 mm (576913) - MAC74 Reference Sphere Support (576923) - MTC90 LAS / LAS-XL Trolley Case (576949) <p>Compatibility: AT960</p>
--------	--

Hexagon's Manufacturing Intelligence division

Leica Absolute Scanner LAS and LAS-XL

Accessories

Mounting Solutions



Article	Description
576914	MAP65 Horizontal Scanner Holder For holding the scanner at a horizontal orientation. Compatibility: LAS

Cables and Small Electronic Devices



Article	Description
576912	MCA63 Scanner Sensor Cable, 20 m Connects LAS (576908) or LAS-XL XXXX to LASC-211 Scanner Controller (576909). Compatibility: AT960



576873	MPS21 Power Supply Unit Power supply for AT930/960 or ATS600. Connects to AT Controller (576871) or ATS Controller (576891). Input 80-264 VAC to output 48 VDC. Compatible with AT Controller (576871) and MPB25 Battery External Li-Ion 37V/8.1Ah (576875) and LASC-211 Scanner Controller (576909). For indoor use only. Compatibility: AT930, AT960, ATS600
--------	--



576911	MCA62 Scanner Sensor Cable, 10 m Connects LAS (576908) or LAS-XL XXXX to LASC-211 Scanner Controller (576909). Compatibility: AT960
--------	---



576903	MCA47, T-Scan Trigger/Probe Cable 2 m Connects AT960 Tracker Controller with T-Scan 5 and LASC-211 Controller unit. Compatibility: AT960
--------	--



576945	MCA86, Scanner Sensor Cable, 30 m The MCA86 Scanner Sensor Cable connecting the LAS Absolute Scanner (576908, 576943) to LASC-211 Scanner Controller (576909). Compatibility: AT960
--------	---

Hexagon's Manufacturing Intelligence division

Leica Absolute Scanner LAS and LAS-XL

Fieldcheck, Calibration and Recertification

Article	Description
	<p>576913 MAC64, Reference Sphere d=30 mm</p> <p>The Reference Sphere is designed for field checks and alignments of Scanning systems.</p> <p>Consists of:</p> <ul style="list-style-type: none"> - Reference Sphere d=30 mm - Certificate <p>Compatibility: AT960</p>
	<p>576923 MAC74, Reference Sphere Support</p> <p>The Reference Sphere Support is designed to hold the MAC64, Reference Sphere d=30 mm (576913).</p> <p>It has a central UNC 5/8"-11 thread, which is compatible with our tripods (576901 MST36, 575483 AT21, 575484 AT28).</p> <p>In addition there are 2 universal 7 mm bore holes.</p> <p>Compatibility: AT960</p>
	<p>576947 MAC87, Reference Sphere d=90 mm</p> <p>The Reference Sphere is designed for field checks and alignments of Scanning systems.</p> <p>Consists of:</p> <ul style="list-style-type: none"> - Reference Sphere d=90 mm (aluminum) with support - Sphericity/Roundness 0.030 mm - Weight: 1200 g - Certificate <p>The Reference Sphere Support has a central UNC 5/8"-11 thread, which is compatible with our stands (MST36, AT21, AT28).</p> <p>In addition there are 2 universal 7 mm bore holes.</p> <p>Compatibility: AT960</p>
	<p>6010685 MAC64, Reference Sphere d=30 mm Set</p> <p>The set consists of:</p> <ul style="list-style-type: none"> - 1x MAC64, Reference Sphere d=30 mm (576913) incl. Certificate - 1x MAC77, Reference Sphere Support (576923) <p>Remark:</p> <p>The Reference Sphere Support has a central UNC 5/8"-11 thread, which is compatible with our stands (MST36, AT21, AT28).</p> <p>In addition there are 2 universal 7 mm bore holes.</p> <p>Compatibility: AT960</p>

Hexagon's Manufacturing Intelligence division

Leica Absolute Scanner LAS and LAS-XL

Cart, Boxes and Cases



Article 576922 **Description** MTC73, LAS Trolley Case
 The Trolley Case can hold:
 - LAS Absolute Scanner (576908),incl. Certificate
 - LASC-211 Scanner Controller (576909)
 - MCA62, Scanner Sensor Cable, 10 m (576911)
 - MPS21, Power Supply Unit (576873)
 - LAN-cable RJ-45, 5 m (575899)
 - MCA47, T-Scan Trigger/Probe Cable 2 m (576903)
 - MAC64, Reference Sphere d=30 mm (576913)
 - MAC74, Reference Sphere Support (576923)
 - MAP65, Horizontal holder (576914)
 - MAV67, Scanner Controller Feet Set (576915)
 - T-Probe III (576186)
 - T-Probe Styli Kit (576231)
 - MPB25, Battery external Li-Ion 37V/8.1Ah (576875)
 L=62.5 cm, W=50 cm, H=36.6 cm (L=24.60", W= 19.70", H=14.40")
 Remark:
 Empty Transport Container only. Accessories to be ordered separately.
 Compatibility: AT960



576910 MTC61, LAS Transport Case
 The Transport Case can hold:
 - LAS Absolute Scanner (576908)
 - LASC-211 Scanner Controller (576909)
 - MCA62, Scanner Sensor Cable, 10 m (576911)
 - Power Supply Unit (576873)
 - LAN-cable RJ-45, 5 m (575899)
 - MCA47, T-Scan Trigger/Probe Cable 2 m (576903)
 - MAC64, Reference Sphere Ø25mMTC61,(576913)
 - Horizontal holder (576914)
 - MAV67, Scanner Controller Feet Set (576915)
 - Certificate
 L=49.6 cm, W=33.0 cm, H=25.6 cm (L=19.53", W= 12.99", H=10.08")
 Empty Transport Container only. Accessories to be ordered separately.
 Compatibility: AT960

Hexagon's Manufacturing Intelligence division

Leica Absolute Scanner LAS and LAS-XL



- 576949 MTC90, LAS / LAS-XL Trolley Case
 The Transport Case can hold:
- 1x LAS-XL Absolute Scanner (576943)
 - 1x LAS-20-8 Absolute Scanner (576908)
 - 1x LASC-211 Scanner Controller (576909)
 - MCA63, Scanner Sensor Cable, 20 m (576912)
 - MPS21, Power Supply Unit (576873)
 - LAN-cable RJ-45, 5 m (575899)
 - MCA47, T-Scan Trigger/Probe Cable 2 m (576903)
 - 2x MAP65, Horizontal holder (576914)
 - MAC64, Reference Sphere d=30 mm Set (6010685)
 - MAC87, Reference Sphere d=90 mm (576947)
 - MPB25, Battery external Li-Ion 37V/8.1A (576875)
 - Leica T-Probe III (576186)
 - Red-Ring Reflector (RRR) 1.5" (575784)
- L=62.5 cm, W=50 cm, H=36.6 cm (L=24.60", W= 19.70", H=14.40")
 Empty Transport Container only. Accessories to be ordered separately.
 Compatibility: AT960



- 576944 MTC85, LAS-XL Trolley Case
 The Transport Case can hold:
- LAS-XL Absolute Scanner (576943)
 - LASC-211 Scanner Controller (576909)
 - MCA63, Scanner Sensor Cable, 20 m (576912)
 - MPS21, Power Supply Unit (576873)
 - LAN-cable RJ-45, 5 m (575899)
 - MCA47, T-Scan Trigger/Probe Cable 2 m (576903)
 - MAC87, Reference Sphere d=90 mm (576947)
 - MAP65, Horizontal Holder (576914)
- L=49.6 cm, W=33.0 cm, H=25.6 cm (L=19.53", W= 12.99", H=10.08")
 Empty Transport Container only. Accessories to be ordered separately.
 Compatibility: AT960

Service Products

Product suggestions for CO AFM.
 These Products cannot be ordered from the Tracker PL.

Absolute Scanner

Article	Description
5310344	Additional LAS Platinum Customer Care Package
5310345	Additional LAS Gold Customer Care Package
5310346	Additional LAS Silver Customer Care Package
5310347	Additional LAS Bronze Customer Care Package
5310377	Additional LAS Scanner Year 2 point of sale Bronze Customer Care Package to Platinum Customer Care Package upgrade

Hexagon's Manufacturing Intelligence division

Leica Absolute Scanner LAS and LAS-XL

- 5310378 Additional LAS Scanner Year 3 point of sale Platinum Customer Care Package
- 5310379 Additional LAS Scanner Year 3&4 point of sale Platinum Customer Care Package
- 5310380 Additional LAS Scanner Year 3,4 & 5 point of sale Platinum Customer Care Package
- 5307721 LAS Scanners Maintenance and Recertification only
A full maintenance program that includes:
- Entry inspection
- Maintenance and full system diagnostic check
- Scanner alignment
- Final measurement and performance analysis
- Traceable re-certification to national standard
- A System inspection status report
- Work performed in an authorised tracker service centre.
Excludes:
- Shipping and associated freight costs
Duration 1-2 working days.
- 5307733 LAS Scanners Stand-by System Option only
Available as replacement unit whilst your system is in service. System comprises of a sensor, controller and cables.
Available for shipment during standard working hours after fault diagnoses or upon scheduling prior to routine maintenance.

Hexagon's Manufacturing Intelligence division

Leica T-Scan 5

Leica T-Scan 5



Article	Description
576187	<p>Leica T-Scan 5 3D laser line scanner for AT960 systems. System consists of:</p> <ul style="list-style-type: none"> - 3D laser scanner unit T-Scan 5 incl. transportation case - Scanner Sensor Cable, 10 m - Scanner Controller (Rev.2.0) - MPS21 Power Supply Unit (576873) - MCA47 Trigger/Probe Cable 2m (576903) - LAN Cable 2 m (RJ-45) - MAP39 Horizontal Scanner Holder (576188) - MAC41 Reference Sphere d=50 mm (576190) - T-Collect Interface Software <p>Compatibility: AT960</p>

Accessories

Mounting Solutions



Article	Description
576189	<p>MAM40, Vertical Scanner Holder The MAM40, Vertical Scanner Holder mounts to the MMC31, Metrology Measurement Cart (576181). MMC91, Absolute Tracker Measurement Cart is not compatible (576950).</p>



576188	<p>MAP39, Horizontal Scanner Holder Compatibility: AT960</p>
--------	--

Cables and Small Electronic Devices



Article	Description
576193	<p>MCA38, T-Scan Sensor Extension Cable 10 m With the MCA38 T-Scan Sensor Extension Cable, connecting the original T-Scan 5 Sensor cable, provides an extension of 10 m to a total T-Scan 5 sensor cable length configuration of 20 m (10 m + 10 m). Compatibility: AT960</p>



576903	<p>MCA47, T-Scan Trigger/Probe Cable 2 m Connects AT960 Tracker Controller with T-Scan 5 and LASC-211 Controller unit. Compatibility: AT960</p>
--------	---

Hexagon's Manufacturing Intelligence division

Leica T-Scan 5



576194 MCA42, T-Scan Controller Automation Cable 2 m
 The MCA42 T-Scan Controller Automation Cable 2 m connecting the T-Scan 5 Controller (819828) to the Automation Interface Controller (576406).
 Compatibility: AT960



576928 MCA76, T-Scan Sensor Automation Cable, 30 m
 The MCA76 T-Scan Sensor Automation Cable 30 m connecting the T-Scan 5 (T-Scan ODU-female connector) to the T-Scan 5 Controller (819828).
 Note: The MCA76 can be used as a T-Scan Sensor Extension Cable.
 Compatibility: AT960



576197 MCA45, T-Scan Sensor Automation Cable 50 m
 The MCA45 T-Scan Sensor Automation Cable 50 m connecting the T-Scan 5 (T-Scan ODU-female connector) to the T-Scan 5 Controller (819828).
 Note: The MCA45 can be used as a T-Scan Sensor Extension Cable.
 Compatibility: AT960

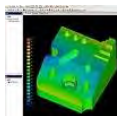
Fieldcheck, Calibration and Recertification



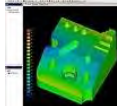
Article	Description
576190	AC41, Reference Sphere Ø50 mm Reference Sphere Ø50 mm with magnetic base for field check and alignment checks of the T-Scan system. Compatibility: AT960

T-Scan Software

Demo

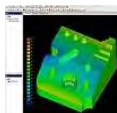


Article	Description
576202	SW T-Scan Collect Demo-Version Not for resale and/or contract work. Available with approval from product management.



576576	SW T-Scan5 Collect Demo Dongle Not for resale and/or contract work. Available with approval from product management.
--------	--

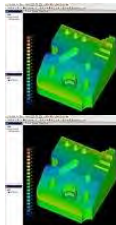
Upgrades



Article	Description
576207	SW T-Scan Collect Upgrade This entitles the user to upgrade to the latest version of T-Scan Collect SW at any time after the 12 month warranty has expired.

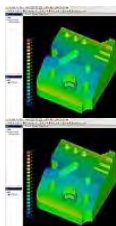
Hexagon's Manufacturing Intelligence division

Leica T-Scan 5



- 576208 SW T-Scan Interface Upgrade
Entitles the user to upgrade to the latest version of T-Scan Interface SW at any time after the 12 month warranty has expired.
- 576852 SW T-Scan5 Collect Interface Conversion Upgrade
Upgrade from T-Scan5 Collect Interface to T-Scan5 Collect full version.

Copy Protection



- | Article | Description |
|---------|--|
| 576209 | T-Scan Collect USB Replacement Dongle
USB Replacement Dongle for existing T-Scan Collect dongle for parallel port or in case of defect. |
| 576210 | SW T-Scan Collect Lost Replacement dongle
Please specify dongle number. |

Service Products

Product suggestions for CO AFM.
These Products cannot be ordered from the Tracker PL.

T-Scan

- | Article | Description |
|---------|---|
| 5310339 | Additional T-Scan 5 Platinum Customer Care Package |
| 5310340 | Additional T-Scan 5 Gold Customer Care Package |
| 5310341 | Additional T-Scan 5 Silver Customer Care Package |
| 5310342 | Additional T-Scan 5 Bronze Customer Care Package |
| 5310373 | Additional T-Scan 5 Year 2 point of sale Bronze Customer Care Package to Platinum Customer Care Package upgrade |
| 5310374 | Additional T-Scan 5 Year 3 point of sale Platinum Customer Care Package |
| 5310375 | Additional T-Scan 5 Year 3&4 point of sale Platinum Customer Care Package |
| 5310376 | Additional T-Scan 5 Year 3,4 & 5 point of sale Platinum Customer Care Package |

Hexagon's Manufacturing Intelligence division

Leica T-Scan 5

- 5307720 Maintenance and Recertification T-Scan5 only
A full maintenance program that Includes:
- Entry inspection
- Maintenance and full system diagnostic check
- Scanner alignment
- Final measurement and performance analysis
- Traceable re-certification to national standard
- A System inspection status report
- Work performed in an authorised tracker service centre.
Excludes:
- Shipping and associated freight costs Duration 1-2 working days
- 5307732 T-Scan5 Stand-by System Option only
Available as replacement unit whilst your system is in service.
System comprises of a sensor,controller and cables. Available for shipment during standard working hours after fault diagnoses or upon scheduling prior to routine maintenance.

Hexagon's Manufacturing Intelligence division

Leica T-Probe

Leica T-Probe



Article	Description
576186	<p>Leica T-Probe III</p> <p>Portable wireless probing system for AT960 systems. A light-weight measurement probe with configurable function buttons allows measurements in small and large measurement volumes with minimal preparation time. The measurement range of the T-Probe is up to 30 metres in all directions. The T-Probe configuration consists of:</p> <ul style="list-style-type: none"> - Wireless probing sensor T-Probe (576186) incl. certificate and transport case - T-Probe Stylus Adaptor –M5 (576212) - Ruby Ball Stylus d=6 mm –M5 (576221) - 2x Stylus Tool for M5 Threaded Styli (576225) - MAC34 T-Probe Stylus Compensation Tool (576899) - T-Probe Battery Charger (734195) - 2x T-Probe Spare Battery (575983) <p>Compatibility: AT960</p>

Accessories

Batteries



Article	Description
575983	<p>T-Probe replacement battery</p> <p>Compatibility: AT960</p>



734195	<p>T-Probe battery charger</p> <p>Compatibility: AT960</p>
--------	--

Cables and Small Electronic Devices



Article	Description
575972	<p>Cable T-Probe, 10 m</p> <p>Compatibility: AT960</p>



575973	<p>Cable T-Probe, 20 m</p> <p>Reserve or replacement cable 20 m for the T-Probe</p> <p>Compatibility: AT960</p>
--------	---

Hexagon's Manufacturing Intelligence division

Leica T-Probe

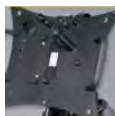


576185 Cable T-Probe, 50 m
Reserve or replacement cable 50 m for the T-Probe
Compatibility: AT960

Reflectors, Tape Targets



Article	Description
576231	<p>T-Probe styli kit Recommended stylus kit for T-Probe. The Styli Kit contains the following content:</p> <ul style="list-style-type: none"> - Scribe stylus r=0.1 mm - M2 (576219) - Ruby ball stylus d=3 mm - M5 (576220) - Ruby ball stylus d=6 mm - M5 (576221) - Ceramic hemispherical stylus d=0.5in - M5(576143) - Ceramic hemispherical stylus d=1.5in - M5(576144) - Stylus extension 100 mm - M5 - carbon fibre - stem d=20 mm (576213) - Stylus extension 200 mm - M5 - carbon fibre - stem d=20 mm (576214) - Stylus extension 40 mm - M5 - carbon - stem d=11 mm (576217) - 2x T-Probe stylus adaptor - M5 with precision quick release with self-identification (576212) - 2x Stylus Tool for M2-M3 threaded styli (576223) - 2x Stylus Tool for M5 threaded styli (576225) - Stylus Adaptor M5-M2 (576226) - T-Probe styli kit case for standard configuration (576211) <p>Compatibility: AT960</p>



575980	<p>T-Probe Compensation Kit For on-site compensation of T-Probe. It comes with T-Probe reference frame, wedge tool, tripod screw and light duty magnetic holder for 0.5" Red Ring Reflectors. Requires additional 0.5" Red Ring Reflector (corner cube) for compensation process. The T-Probe compensation kit fits into the T-Cam compensation kit shipping container. Compatibility: AT960</p>
--------	--

Styli & Extensions



576212	<p>T-Probe stylus adaptor, M5 Precision quick release adaptor for T-Probe styli to remove and attach styli without re-calibration. The stylus adaptor has built in intelligence to support stylus selfidentification. Compatibility: AT960</p>
--------	--



576213	<p>Stylus extension 100 mm, M5, carbon fibre, stem, Ø 20 mm. Compatibility: AT960</p>
--------	---

Hexagon's Manufacturing Intelligence division

Leica T-Probe



576214 Stylus extension 200 mm, M5,
carbon fibre, stem Ø 20 mm.
Compatibility: AT960



576215 Stylus extension 400 mm, M5,
carbon fibre, stem Ø 20 mm.
Compatibility: AT960



576216 Stylus extension 600 mm, M5,
carbon fibre, stem Ø 20 mm.
Compatibility: AT960



576217 Stylus extension 40 mm, M5, carbon,
stem Ø 11 mm.
Compatibility: AT960



576218 Stylus extension 100 mm, M5, carbon,
stem Ø 11 mm.
Compatibility: AT960



576219 Scribe stylus $r=0.1$ mm, M2
Compatibility: AT960



576220 Ruby ball stylus $d=3$ mm, M5
Compatibility: AT960



576221 Ruby ball stylus $d=6$ mm, M5
Compatibility: AT960



576248 Cylindrical stylus 22.5 mm, $d=3$ mm - M2
Compatibility: AT960



576222 Edge stylus, M5
Comes with edge sphere 0.5", magnetic stylus M5
and compensation sphere 0.5"
Compatibility: AT960

Hexagon's Manufacturing Intelligence division

Leica T-Probe



576223 Stylus tool for M2 and M3 threaded styli
Compatibility: AT960



576224 Stylus tool for M4 threaded styli
Compatibility: AT960



576225 Stylus tool for M5 threaded styli
Compatibility: AT403, AT960



576226 Stylus adaptor M5-M2
Compatibility: AT960



576227 Stylus adaptor M5-M4
Compatibility: AT960



576228 Stylus adaptor M4-M5
Compatibility: AT960



576143 Ceramic hemispherical stylus d=0.5in-M5
Compatibility: AT960



576144 Ceramic hemispherical stylus d=1.5in-M5
Compatibility: AT960



576403 Punch Tool - M5
The punch tool is an accessory for the T-Probe, it is a stylus that is used for laying out scribe lines (by punching) on the object for the next following manufacturing process.
Compatibility: AT960



576408 Replacement Tip to Punch Tool 576403
Compatibility: AT960

Hexagon's Manufacturing Intelligence division

Leica T-Probe



577356 90Deg. Adapter for T-Probe
 90-degree adapter with M5f/M5m thread, compatible with all M5 stylus and CFK extensions. Used for 90-degree stylus configurations with Leica T-Probe.
 Compatibility: AT960

Fieldcheck, Calibration and Recertification



Article 576899 **Description** MAC34, T-Probe Stylus Compensation Tool
 The MAC34 is used for on-site T-Probe Stylus compensations of various styli configurations. The MAC34 can be extended for Shank-Stylus with the T-Probe Stylus Shank Compensation Tool (576247).
 Compatibility: AT960



576900 MAC35, Magnetic Device for MAC34
 On the MAC35 Magnetic Device the MAC34 T-Probe Stylus Compensation Tool can be fixed. The MAC35 holds on any magnetic surface. Magnetic force can be switched on and off. The 576899 MAC34 T-Probe Stylus Compensation Tool needs to be ordered seperately.
 Compatibility: AT960



576247 MAC57, T-Probe Stylus Shank-Comp.-Tool
 The MAC57 is an accessory to compensation cylindrical probe stylus. The MAC57 accessory is mounted to the 576899 MAC34, T-Probe Stylus Compensation Tool.
 Compatibility: AT960

Cart, Boxes and Cases



Article 576211 **Description** T-Probe styli kit case for standard configuration (empty)
 Compatibility: AT960

Hexagon's Manufacturing Intelligence division

Leica Absolute Tracker AT403

Main Sensors



Article	Description
576361	<p>Leica Absolute Tracker AT403 Absolute Tracker 403 including:</p> <ul style="list-style-type: none"> - AT403 Sensor - AT Controller - MCS17 Sensor Cable - GDF31-I Tribrach - MCA15 Ext. Temperature Sensor - Red-Ring Reflector (RRR) 1.5" - AT400 IR remote control - 5 m LAN cable - MSI26 Universal Stand Adapter - 2 GEB242 Batteries - GKL311 Battery Charger - AC adapter - MTC75 AT40x Transport Container - Calibration Certificate Metrology - Quick Guide - Compensation SW <p>24 Month Warranty*</p> <p>*The 24-month factory warranty period is conditional on the performance of annual maintenance and recertification.</p>



6011846	<p>AT403 Probing System Absolute Tracker AT403 bundled with B-Probe The system consist of:</p> <ul style="list-style-type: none"> - Absolute Tracker AT403 (576361) - B-Probe (576511)
---------	--

HW Options



Article	Description
575757	<p>Wireless RF Control Wireless Radio Frequency Remote Control (2.4GHz), 4 custom programmable buttons, up to 45 m/150ft Range, USB interface, compatible with Windows XP or higher (32bit/64bit). Compatibility: AT403, AT9x0, ATS600</p>



575965	<p>Wireless Infrared Remote Control, 4 custom programmable buttons, up to 20 m/65ft range, USB interface, compatible with Windows XP or higher (32bit/64bit). Compatibility: AT403, AT9x0, ATS600</p>
--------	---

Hexagon's Manufacturing Intelligence division

Leica Absolute Tracker AT403

Accessories

Mounting Solutions

Article **Description**
 576352 GDF321-I, Tribrach PRO without optical plummet, light grey.
 Compatibility: TM6100A, AT403



576353 GDF322-I, Tribrach PRO with optical plummet, light grey.
 Compatibility: TM6100A, AT403



575483 AT21 Aluminium Tripod
 Robust tripod for general use with 5/8" thread. Suitable for Total Stations, theodolites and laser tracker field check equipment.
 Instrument height from 1.4 to 2.1 m (4.6 – 6.9 ft), weight 11 kg (24.2 lb).
 Compatibility: AT403, AT930, AT960, ATS600



575484 AT28 Aluminium Tripod
 Robust tripod for general use with adjustable centre column and 5/8" thread. Suitable for Total Stations, theodolites and laser tracker field check equipment. Instrument height from 1.4 to 2.8 m (4.6 - 9.2 ft), weight 12 kg (26.4 lb).
 Compatibility: AT403, AT9x0, ATS600



576349 AT08 Aluminum Tripod
 For easy demos, increased portability and reduction of total system weight. Aluminum tripod for Absolute Tracker systems with 3.5" x 8 thread interface. The tripod interface is compatible with the AT Quick Release Mount (576338).



Tripod height (working position): 815 mm (fixed)
 Dimensions: 25 x 25 x 100 cm (folded)
 Weight: 10 kg (without AT Quick Release Mount)
 Special feature: Cable fixation

Notes:
 For best stability and accuracy use of the standard tracker stand and stand extension is recommended. Adapter 577261 from Hubbs required for AT40x sensors.

Compatibility: AT403, AT930, AT960

576354 MAS12, Stand Adapter
 The MAS16 Stand Adapter fits on the AT Stand Extension (576337) from the AT901.
 The Stand Adapter is designed in such way, that the tilting axis of the AT40x is at the same height as the AT901 when used on the AT Stand Extension.
 Compatibility: AT403



Hexagon's Manufacturing Intelligence division

Leica Absolute Tracker AT403

- | | |
|--|---|
|  | <p>576337 AT Stand Extension
 Base stand extension for AT Laser Trackers.
 The AT Stand Extension does not include 576338 AT Quick Release Mount, which is already integrated with any AT901. The AT Stand Extension can be extended either with 575998 Stand extension, 380 mm (15") or 575999 Stand extension, 180 mm (7").
 Compatibility: TM6100A, AT403</p> |
|  | <p>575997 Absolute Tracker Stand
 Equipped with three levelling screws and shock absorbing wheels.
 Compatibility: AT403, AT9x0, ATS600</p> |
|  | <p>576895 MSI26 Universal ATC Stand Fixture
 Universal stand fixture for AT Controller with reusable Velcro strap (0.52 m).
 Compatible with:
 - AT Controller (576871, 576368)
 - ATS Controller (576981)
 - MPB25, Battery external Li-Ion 37V/8.1Ah (576875)
 Compatibility: AT403, AT9x0, ATS600</p> |
|  | <p>576920 MAS71 Power Supply Unit Fixture
 Fixture to hold a power supply unit by attaching to the stand, keeping the power supply off the ground. Holds the following power supply units:
 - MPS21 Power Supply Unit (576873)
 - AC/DC Adapter 15V (773058)</p> <p>Attaches to the following stands/fixtures:
 - MST27 Stand Tube Extension (576881)
 - MST36 Portable Metrology Tripod Carbon (576901)
 - MSI26 Universal ATC Stand Fixture (576895)
 Compatibility: AT403, AT9x0, ATS600</p> |
|  | <p>577351 AT Base Plate Type A
 Base plate with non-adjustable pointed-tip feet for AT40x, AT9x0 and ATS600 sensor series. Adaptation 5/8" thread and borehole pattern for Quick Release adapter. Quick Release adapter not included. All stainless-steel finish. Plate height approx. 40 mm, weight 9 kg.
 Compatibility: AT403, AT930, AT960, ATS600</p> |

Hexagon's Manufacturing Intelligence division

Leica Absolute Tracker AT403



- 577352** AT Base Plate Type B
Base plate with adjustable machine feet for levelling for AT40x, AT9x0 and ATS600 sensor series. Adaptation 5/8" thread and borehole pattern for Quick Release adapter. Type B is delivered with non-slip rubber-type machine feet. Quick Release adapter not included. All stainless-steel finish. Plate height approx. 60 mm. Weight 10 kg.
Compatibility: AT403, AT930, AT960, ATS600



- 577353** AT Base Plate Type C
Base plate with adjustable machine feet for levelling for AT40x, AT9x0 and ATS600 sensor series. Adaptation 5/8" thread and borehole pattern for Quick Release adapter. Type C is delivered with stainless-steel type machine feet. Quick Release adapter not included. All stainless-steel finish. Plate height approx. 60 mm. Weight 10 kg.
Compatibility: AT403, AT930, AT960, ATS600



- 577354** AT Base Plate Type D
Base plate with adjustable machine feet for levelling for AT40x, AT9x0 and ATS600 systems. Adaptation 5/8" thread and borehole pattern for Quick Release adapter. Type D is delivered with pointed-tip feet. Quick Release adapter not included. All stainless-steel finish. Plate height approx. 60 mm. Weight 9.5 kg.
Compatibility: AT403, AT930, AT960, ATS600



- 577355** Pointed Screw Kit 80mm for AT Base Plates
Conversion kit with pointed-tip feet for Base Plate Types B and C. Stainless steel.
Compatibility: AT403, AT930, AT960, ATS600

Mounting Solutions Geosystems



- Article** **Description**
296632 GST20 Tripod, telescopic, with accessories.
Robust, well-established tripod for general use.
Suitable for levels, lasers, Total Stations and GPS.
Extendible 180 cm (5.9ft), weight 6.4 kg (14.1lb)
Compatibility: TM6100A, AT403



- 332200** GST4 Tripod base,
for setting up GST tripods on smooth surfaces.
Compatibility: TM6100A, AT403

Batteries Geosystems



- Article** **Description**
799185 GKL311, Charger Pro 3000
basic charger for one Li-Ion battery, for GEB211, GEB212, GEB221, GEB222, GEB241, GEB242, GEB331 and GEB361 including AC/DC adaptor.
Compatibility: TM6100A, AT403

Hexagon's Manufacturing Intelligence division

Leica Absolute Tracker AT403



- 799187 GKL341, Charger Pro 5000
Professional charger to charge up to 4x Li-Ion batteries GEB241 and GEB242, AC adapter included.
Compatibility: TM6100A, AT403



- 793975 GEB242, Lithium Ion battery,
14.8V/5.8Ah, chargeable.
Compatibility: TM6100A, AT403

Cables and Small Electronic Devices



- Article** **Description**
576379 AT Remote Control 400
The Wireless Infra-Red Control unit is compatible with Absolute Tracker AT40x.
Content: Remote control unit, 2 AAA-batteries.
Compatibility: AT403



- 576350 MCA15, External Temperature Sensor, 2 m
The MCA15 external NTC Temperature Sensor connects to the AT Controller 400 or the standalone AT MeteoStation. The temperature sensor is configured with a 2 m cable and its tip is square shaped by 8 x 8 x 40 mm with a borehole $\varnothing 4.2$ mm to fix it to the object. It can be used as an air- and/or object- sensor.
Parameter:
Temperature range: $-20^{\circ}\text{C} \dots +50^{\circ}\text{C}$
 $-20 \dots +50^{\circ}\text{C}$
Accuracy:
Temperature: $\pm 0.2^{\circ}\text{C}$
Compatibility: AT403



- 576351 MCA14, External Temperature Sensor, 10 m
The MCA14 external NTC Temperature Sensor connects to the AT Controller 400 or the standalone AT MeteoStation. The temperature sensor is configured with a 10 m cable and its tip is square shaped by 8 x 8 x 40 mm with a borehole $\varnothing 4.2$ mm to fix it to the object. It can be used as an air- and/or object- sensor.
Parameter:
Temperature range: $-20^{\circ}\text{C} \dots +50^{\circ}\text{C}$
Accuracy:
Temperature: $\pm 0.2^{\circ}\text{C}$
Compatibility: AT403



- 575899 Lan cable RJ-45, 5 m, crossed
Compatibility: AT403, AT930, AT960, ATS600



- 576360 AT Controller 400
Compatibility: AT403

Hexagon's Manufacturing Intelligence division

Leica Absolute Tracker AT403



- 576376 MCS17, Sensor Cable, 1.8 m
Compatible with Absolute Tracker AT40x to AT Controller 400.
Compatibility: AT403



- 576356 MCS82, Sensor Cable 5 m
Compatibility: AT403



- 576357 MCS83, Sensor Cable 10 m
Compatibility: AT403

- 576359 AT Controller 400 Swap Option
The AT Controller 400 Swap Variant can be ordered by existing customers of AT401/AT402 instruments.

Reflectors



- Article** **Description**
575784 Red-Ring Reflector (RRR) 1.5",
Corner-cube reflector with removable ring, protective cover for optics and certificate. Delivered in wooden box.

Radius: 19.05 mm ± 0.0025 mm (0.750 in ± 0.0001 in)
Centring of optics: $< \pm 0.003$ mm ($< \pm 0.00012$ in)
Roundness (ball): ≤ 0.003 mm (≤ 0.00012 in)
Acceptance angle: $\pm 30^\circ$
Material ball: Stainless steel, surface-hardened, magnetic
Weight: 170 g (6.00 oz)
Limitations due to ring: none
Compatibility: AT403, AT9x0, ATS600



- 576241 Red-Ring Reflector 1.5" (RRR), 2-pack
Pack of 2 corner-cube reflectors with removable ring, protective cover for optics and certificate. Delivered in wooden box.

Radius: 19.05 mm ± 0.0025 mm (0.750 in ± 0.0001 in)
Centring of optics: $< \pm 0.003$ mm ($< \pm 0.00012$ in)
Roundness (ball): ≤ 0.003 mm (≤ 0.00012 in)
Acceptance angle: $\pm 30^\circ$
Material ball: Stainless steel, surface-hardened, magnetic
Weight: 170 g (6.00 oz)
Limitations due to ring: none
Compatibility: AT403, AT9x0, ATS600

Hexagon's Manufacturing Intelligence division

Leica Absolute Tracker AT403



- 576242 Red-Ring Reflector 1.5" (RRR), 5-pack
Pack of 5 corner-cube reflectors with removable ring, protective cover for optics and certificate. Delivered in wooden box.

Radius: 19.05 mm \pm 0.0025 mm (0.750 in \pm 0.0001 in)
Centring of optics: $<$ \pm 0.003 mm ($<$ \pm 0.00012 in)
Roundness (ball): \leq 0.003 mm (\leq 0.00012 in)
Acceptance angle: \pm 30°
Material ball: Stainless steel, surface-hardened, magnetic
Weight: 170 g (6.00 oz)
Limitations due to ring: none
Compatibility: AT403, AT9x0, ATS600



- 576243 Red-Ring Reflector 1.5" (RRR), 10-pack
Pack of 10 corner-cube reflectors with removable ring, protective cover for optics and certificate. Delivered in wooden box.

Radius: 19.05 mm \pm 0.0025 mm (0.750 in \pm 0.0001 in)
Centring of optics: $<$ \pm 0.003 mm ($<$ \pm 0.00012 in)
Roundness (ball): \leq 0.003 mm (\leq 0.00012 in)
Acceptance angle: \pm 30°
Material ball: Stainless steel, surface-hardened, magnetic
Weight: 170 g (6.00 oz)
Limitations due to ring: none
Compatibility: AT403, AT9x0, ATS600



- 576244 Break Resistant Reflector 1.5" (BRR)
Reflector with collar protection cover for optics and certificate. Delivered in wooden box.

Radius: 19.05 mm \pm 0.0025 mm (0.7500 in \pm 0.00010 in)
Centring of optics: $<$ \pm 0.010 mm ($<$ \pm 0.0004 in)
Roundness (ball) $<$ \pm 0.0015 mm ($<$ \pm 0.00006 in)
Acceptance angle: $<$ \pm 30°
Material ball: Stainless steel, surface-hardened, magnetic
Weight: 195 g (6.88 oz)
Limitations due to collar: none
Compatibility: AT403, AT9x0



- 576311 Red-Ring Reflector (RRR) 7/8"
Corner-cube reflector with removable ring, protective cover for optics and certificate. Delivered in wooden box.

Radius: 11.1125 mm \pm 0.0025 mm (0.4375 in \pm 0.0001 in)
Centring of optics: $<$ \pm 0.003 mm (\pm 0.00012 in)
Roundness (ball): \leq 0.003 mm (\leq 0.00012 in)
Material (ball): Stainless steel, hardened, magnetic.
Acceptance angle: \pm 30°
Weight: 35 g (1.23 oz)
Limitations due to ring: none
Compatibility: AT403, AT9x0, ATS600

Hexagon's Manufacturing Intelligence division

Leica Absolute Tracker AT403



- 576312 Red-Ring Reflector (RRR) 7/8", 2-pack
Pack of 2 corner-cube reflectors with removable ring, protective cover for optics and certificate. Delivered in wooden box.

Radius: 11.1125 mm \pm 0.0025 mm (0.4375 in \pm 0.0001 in)
Centring of optics: $< \pm$ 0.003 mm (\pm 0.00012 in)
Roundness (ball): \leq 0.003 mm (\leq 0.00012 in)
Material (ball): Stainless steel, hardened, magnetic.
Acceptance angle: \pm 30°
Weight: 35 g (1.23 oz)
Limitations due to ring: none
Compatibility: AT403, AT9x0, ATS600



- 576313 Red-Ring Reflector (RRR) 7/8", 5-pack
Pack of 5 corner-cube reflectors with removable ring, protective cover for optics and certificate. Delivered in wooden box.

Radius: 11.1125 mm \pm 0.0025 mm (0.4375 in \pm 0.0001 in)
Centring of optics: $< \pm$ 0.003 mm (\pm 0.00012 in)
Roundness (ball): \leq 0.003 mm (\leq 0.00012 in)
Material (ball): Stainless steel, hardened, magnetic.
Acceptance angle: \pm 30°
Weight: 35 g (1.23 oz)
Limitations due to ring: none
Compatibility: AT403, AT9x0, ATS600

Hexagon's Manufacturing Intelligence division

Leica Absolute Tracker AT403



- 576314 Red-Ring Reflector (RRR) 7/8", 10-pack
Pack of 10 corner-cube reflectors with removable ring, protective cover for optics and certificate. Delivered in wooden box.

Radius: 11.1125 mm \pm 0.0025 mm (0.4375 in \pm 0.0001 in)
Centring of optics: $< \pm$ 0.003 mm (\pm 0.00012 in)
Roundness (ball): \leq 0.003 mm (\leq 0.00012 in)
Material (ball): Stainless steel, hardened, magnetic.
Acceptance angle: \pm 30°
Weight: 35 g (1.23 oz)
Limitations due to ring: none
Compatibility: AT403, AT9x0, ATS600



- 576234 Tooling Ball Reflector 0.5" (TBR)
Glass prism reflector with removable ring, protection cover for optics and certificate. Delivered in a wooden box.

Radius: 6.35mm: \pm 0.004mm (0.2500in \pm 0.00016in)
Centring of optics: $< \pm$ 0.01mm ($< \pm$ 0.00039in)
Roundness (ball): $< \pm$ 0.003mm ($< \pm$ 0.00012in)
Acceptance angle: with ring $\leq \pm$ 22°; without ring $\leq \pm$ 50°
Material ball: Stainless steel, surface-hardened, magnetic
Weight: 7 g (0.25oz)
Compatibility: AT403, AT9x0



- 576235 Tooling Ball Reflector 0.5" (TBR), 5-pack
Pack of 5 glass prism reflectors with removable ring, protection cover for optics and certificate. Delivered in a wooden box.

Radius: 6.35mm: \pm 0.004mm (0.2500in \pm 0.00016in)
Centring of optics: $< \pm$ 0.01mm ($< \pm$ 0.00039in)
Roundness (ball): $< \pm$ 0.003mm ($< \pm$ 0.00012in)
Acceptance angle: with ring $\leq \pm$ 22°; without ring $\leq \pm$ 50°
Material ball: Stainless steel, surface-hardened, magnetic
Weight: 7 g (0.25oz)
Compatibility: AT403, AT9x0



- 576236 Tooling Ball Reflector 0.5" (TBR), 10-pack
Pack of 10 glass prism reflectors with removable ring, protection cover for optics and certificate. Delivered in a wooden box.

Radius: 6.35mm: \pm 0.004mm (0.2500in \pm 0.00016in)
Centring of optics: $< \pm$ 0.01mm ($< \pm$ 0.00039in)
Roundness (ball): $< \pm$ 0.003mm ($< \pm$ 0.00012in)
Acceptance angle: with ring $\leq \pm$ 22°; without ring $\leq \pm$ 50°
Material ball: Stainless steel, surface-hardened, magnetic
Weight: 7 g (0.25oz)
Compatibility: AT403, AT9x0

Hexagon's Manufacturing Intelligence division

Leica Absolute Tracker AT403



575848 Reflectors for Fixed Installation 0.5" (RFI), 5-pack.
Pack of 5 glass prism reflectors in a wooden box.

Radius: 6.35 mm (0.2500 in)
Centring of optics: not applicable
Roundness (ball): not applicable
Acceptance angle: $\leq \pm 50^\circ$
Material ball: Anodized aluminum, none magnetic
Weight: 3 g (0.11 oz)
Compatibility: AT403, AT9x0



576246 Reflectors for Fixed Installation 0.5" (RFI), 10-pack.
Pack of 10 glass prism reflectors in a wooden box.

Radius: 6.35 mm (0.2500 in)
Centring of optics: not applicable
Roundness (ball): not applicable
Acceptance angle: $\leq \pm 50^\circ$
Material ball: Anodized aluminum, none magnetic
Weight: 3 g (0.11 oz)
Compatibility: AT403, AT9x0

Reflector Supports



Article	Description
576249	<p>MAT22 Pass Point Target Kit</p> <p>Kit includes:</p> <ul style="list-style-type: none"> 8 x non-magnetic target base to be affixed with hot glue. 5x neodymium magnetic target base with magnetic shield for transportation and storage. <p>Delivered in case with spare cutout for CCR 1.5" reflector (not included), dimensions 250x200x70 mm, weight with targets 1.1 kg.</p> <p>Compatibility: AT403, AT930, AT960, ATS600</p>

Hexagon's Manufacturing Intelligence division

Leica Absolute Tracker AT403



576850 Magnetic NORS Reflector Support for 1.5" Reflectors (RRR/BRR)
Compatibility: AT403, AT930, AT960, ATS600



576851 Magnetic NORS Reflector Support Kit for 1.5" Reflectors (RRR/BRR), kit of 5 units
Compatibility: AT403, AT930, AT960, ATS600

Fieldcheck, Calibration and Recertification



Article **Description**
576898 MAT33 Optical Cleaning Kit
Does away with solvents, harsh cleaning products and messy lens tissues that can leave ugly and problematic smears that ruin measurement quality. Suitable for cleaning AT930/960 or ATS600 sensor optics as well as reflectors.

The kit includes:
 - 1x Dust ex blower (167119)
 - 2x Cleaning Tissues (771349)
 - 8x Cleaning Swabs, large (758346)
 - 5x Cotton Swabs, small (724954)
 - 1x Cleaning Brush (822420)
 - 1x Cleaning Kit Bag (821236)
 Compatibility: AT403, AT9x0, ATS600

Cart, Boxes and Cases



Article **Description**
576520 MTC56, AT40x Trolley Case
Trolley Case/Shipping Container for AT402 (not included) and Optional Accessories (not included), suitable for AT402 systems with GKL311 chargers (799185) and MSI26 (576895).
Compatibility: AT403



833516 GVP716 Backpack for Container
Compatibility: AT403

Hexagon's Manufacturing Intelligence division

Leica Absolute Tracker AT403

Service Products

Product suggestions.
These Products cannot be ordered from the Tracker PL.

For AT403

Article	Description
5310348	AT403 Probing Platinum Customer Care Package
5310349	AT403 Probing Gold Customer Care Package
5310350	AT403 Probing Silver Customer Care Package
5310351	AT403 Probing Bronze Customer Care Package
5310381	AT403/Probe Year 2 point of sale Bronze Customer Care Package to Platinum Customer Care Package upgrade
5310382	AT403/Probe Year 3 point of sale Platinum Customer Care Package
5310383	AT403/Probe Year 3&4 point of sale Platinum Customer Care Package
5310384	AT403/Probe Year 3,4 & 5 point of sale Platinum Customer Care Package
5306194	AT 401 Maintenance & Recertification Standard service product comprising: <ul style="list-style-type: none">- Entry inspection- Full maintenance program- Sensor, controller & firmware updates- Meteo Station recertification- Full compensation & measurement performance analysis- Traceable recertification to national standard- System final inspection status report AT Maintenance and Recertification is recommended annually. Not available on site This service product is available until product phase out.
5306195	AT 402/403 Maintenance & Recertification As service product for AT401 but designed for the 402 & 403. In addition it includes the tracker to B-Probe alignment. AT Maintenance and Recertification is recommended annually. Not available on site. This service product is available until product phase out.

Hexagon's Manufacturing Intelligence division

Leica B-Probe

Leica B-Probe



Article	Description
576511	B-Probe B-Probe is a entry level, portable and wireless probing solution. The B-Probe comes with steel ball stylus 0.5", stylus compensation tool, stylus tool, Micro-USB cable, Calibration Certificate, 4 X AAA batteries and transportation case. Compatibility: AT403

Accessories

Mounting Solutions



Article	Description
576514	Steel ball stylus, D = 0.5", L = 55 mm



576225	Stylus tool for M5 threaded styli Compatibility: AT403, AT960
--------	--

Batteries



Article	Description
576515	Quick-charger Powerline 4 for AAA-batteries (EU, US, UK).

Cables and Small Electronic Devices



Article	Description
576513	USB - micro-USB cable for B-Probe firmware-upgrade via PC.

Hexagon's Manufacturing Intelligence division

Leica B-Probe

Reflectors, Tape Targets & Styli



Article	Description
576221	Ruby ball stylus d=6 mm, M5 Compatibility: AT960

576517	MAP59, Stylus extension 100 mm, M5, d=12 m
--------	--

576518	MAP60, Stylus extension 200 mm, M5, d=12 m
--------	--

Fieldcheck, Calibration and Recertification



Article	Description
576512	B-Probe Stylus Compensation Tool

Hexagon's Manufacturing Intelligence division

Automation Products

Most of the integration products are built to order and therefore require a much longer lead-time than traditional tracker products.

Leica T-MAC



Article	Description
576396	<p>T-Mac Multiface TMC30-M</p> <p>The T-Mac Multiface is a 6DoF machine control probe for use with any Leica 6 DoF Lasertracker.</p> <p>The TMC30-M is the multiface version of the TMC30-I for machine positioning, alignment, calibration and all inspection tasks (such as touch trigger).</p> <p>The TMC30-M consists of:</p> <ul style="list-style-type: none">- T-Mac Multiface TMC30-M (576396) including Certificate and Transportation Case- T-Probe Cable, 20 m (575973) <p>Note: T-Mac Inspect cable (576509, 576510) must be ordered separately.</p> <p>Compatibility: AT9x0</p>



576397	<p>T-Mac Frame TMC30-F Starter Kit</p> <p>The T-Mac Frame TMC30-F Starter Kit is a configurable 6DoF machine control probe for use with any Leica 6 DoF Lasertracker. The T-Mac TMC30-F Starter Kit can be used to create customized multisided probe configurations with anywhere from 1 to 4 frames (faces). To the T-Mac Frame TMC30-F Starter Kit up to 3 additional T-Mac Frames TMC30-F (576398) can be connected in addition.</p> <p>The TMC30-F Starter Kit consists of:</p> <ul style="list-style-type: none">- T-Mac Frame TMC30-F (576398) incl. Certificate and Card-board Transportation Box- CPU Box for TMC30-F (805143)- T-Probe Cable, 20 m (575973)- Connection Cable T-Mac/CPU Box, 0.6 m or 1.8 m (804823, 804824). <p>Compatibility: AT9x0</p>
--------	--

Hexagon's Manufacturing Intelligence division

Automation Products



- 576398 T-Mac Frame TMC30-F
- The T-Mac Frame TMC30-F is a configurable 6DoF machine control probe for use with any Leica 6 DoF Lasertracker. The TMC30-F can be used to create customized multisided probe configurations with anywhere from 1 to 4 frames (faces). The T-Mac Frame TMC30-F can be used to extend angular measuring range of the T-Mac Frame TMC30-F Starter Kit (576397) or an existing T-Mac Basic TMC30-B (576400) or T-Mac Inspect TMC30-I (576410). For TMC30-B or TMC30-I the Frame extension interface for T-Mac (5003434) is needed (orderable from Laser Tracker Service Unterentfelden, Switzerland, please contact ps.ch@hexagonmetrology.com).
- The T-Mac Frame TMC30-F consists of:
- T-Mac Frame TMC30-F (576398) incl. Certificate and Card-board Transportation Box
 - Connection Cable T-Mac/CPU Box, 0.6 m or 1.8 m (804823, 804824)
- Note: The T-Mac Frame TMC30-F does NOT include a mount for touch trigger inspection device. Please refer to 576395 Upgrade TMC30-F to Inspect.
- Compatibility: AT9x0



- 576400 TMC30-B, T-Mac Basic
- is a specific developed sensor using Leica's 6DoF technology to extend product offering. T-Mac is designed to be used in combination with robots and large machines especially for positioning with high accuracy. T-Mac has the possibility to mount it on a robot or machine and the housing already has 4 reflector nests included. These reflector positions can be used to establish a local coordinate system for object orientation or robot alignment. As an option a tool exchange interface from Sandvick can be adapted.
- The T-Mac basic consists of:
- T-Mac basic TMC30-B (576400) incl. Certificate and Transportation Case
 - T-Probe Cable, 20 m (575973)



- 576404 T-Mac Update Kit Basic to Inspect
- This Kit allows older T-Mac's to be upgraded in order to be used in new inspection systems.
- The Upgrade Kit only contains the internal hardware to convert a TMC30 to a TMC30-I, no additional cables or interfaces are included.
- Please contact service to make sure that the existing T-Mac is capable of receiving this upgrade
- T-Mac Inspect cable must be ordered separately.
- Compatibility: AT9x0

Hexagon's Manufacturing Intelligence division

Automation Products



- 576410 T-Mac Inspect TMC30-I
 The T-Mac is a 6DoF machine control probe for use with the Leica Absolute Tracker AT900 series trackers and T-Cam's. The TMC30-I is the deluxe version of the probe for machine positioning, alignment, calibration and all inspection tasks (such as touch trigger).
 The TMC30-I consists of:
 - T-Mac Inspect TMC30-I (576410) incl. Certificate and Transportation Case
 - T-Probe Cable, 20 m (575973)
 Note: The T-Mac Inspect cable must be ordered separately (10 m - 576509, 30 m - 576510).
 Compatibility: AT9x0

Accessories

Cables and Small Electronic Devices



- Article** **Description**
 576509 T-Mac Inspect TMC30-I Cable, 10 m
 For connecting the TMC30-I to the Automation Interface Controller 576406 or MUX box 576407 directly.



- 576510 T-Mac Inspect TMC30-I Cable, 30 m
 For connecting the TMC30-I to the Automation Interface Controller 576406.



- 576505 Automation Robot Cable, 20 m
 For Connecting the Automation Interface Controller 576406 to the Robotic or NC Machine controller.



- 576506 Automation Robot Cable, 50 m
 For Connecting the Automation Interface Controller 576406 to the Robotic or NC Machine controller.



- 576878 MCA48, Automation Trigger/Probe Y-Cable
 The MCA48 connecting the AT960 Tracker Controller with the Automation Interface Controller (576406).
 The y-ends of the cable must be extended with the standard T-Probe Cable (575972, 575973, 576185) and Trigger Cable (576507, 576508)
 > to be ordered separately.

Hexagon's Manufacturing Intelligence division

Automation Products



576879 MCA49, Automation Interface Cable 50 m connecting the Automation Interface Controller (576406) to the Automation Multiplex Box (576407).



576929 MCA77, Automation Interface Cable, 30 m connecting the Automation Interface Controller (576406) to the Automation Multiplex Box (576407)



576930 Roboter adaptation TMC30-M (vertical) including cable (576931 MCA78) with ODU connector (male).



576932 Robot adaptation T-Mac TMC30-B / TMC30-I (vertical) including cable (576931 MCA78) with ODU connector (male).



576933 Machine adaptation T-Mac TMC30-B / TMC30-I (vertical) including cable (576931 MCA78) with ODU connector (male) (manual connection).



576395 Upgrade TMC 30-F to Inspect
The Upgrade consists of the Touch Trigger Box mount and needed cables between the unit and the T-Mac Frame TMC30-F Starter Kit CPU Box.
The T-Mac Inspect cable must be ordered separately.
Compatibility: AT9x0

Hexagon's Manufacturing Intelligence division

Automation Products



576964 MAA99, Automation Switch Controller

The Automation Switch Controller (ASC) is a device for automatically switching the probe and probe/trigger cable from one tracker to another and/or from one target to another. The ASC provides four pairs of probe and probe/trigger sockets for laser tracker connections and four pairs of probe and probe/trigger sockets for target (probe) connections.

The ASC is a device that enables the use of multiple laser trackers and accessories in any combination, for example a Leica T-Scan 5 or Leica T-Mac could be connected to different laser trackers to optimise accessibility.

Sample setup with two laser trackers and two T Scan systems: the connection between a T Scan system and a laser tracker is a simple probe/trigger cable. If two T Scan systems and two laser trackers are used simultaneously, each laser tracker can only measure on the T Scan that is physically connected to its controller by a probe/trigger cable. If it is required that each of the laser trackers in such a system be able to measure with each of the scanners, an ASC is needed.



577363 APODIUS Absolute Camera AAC with T-Mac

Vision system for automated high-accuracy feature inspection.

Consisting of:

- AAC Vision Sensor with versatile mounter
- AAC Explorer software package incl. interface to application software
- AAC License Dongle software licence USB dongle
- AAC Control Box active router for AAC Vision Sensor, routes signals between sensor and other peripherals
- CB Data Cable 30 m GigE energy chain cable between AAC Control Box and computer, RJ45
- CB Power Cable 20 m power energy chain cable for Control Box, M12 (Control Box), open wires
- IO Cable AIC 30 m IO energy chain cable between Control Box and AIC/tracker, Dsub
- IO Cable Robot 30 m IO energy chain cable between Control Box and robot control, M12 (Control Box), open wires (robot)
- Data Connection Cable 10 m GigE torsion cable between ETM and AAC
- Control Box, Intercontec (Sensor), M12 x-coded (Control Box)
- IO Connection Cable 10 m power and IO torsion cable between ETM and AAC Control Box, Intercontec (Sensor), M12 8-pol (Control Box)
- AAC Calibration Set with calibration plate and OBC-file on USB drive
- T-Mac Frame TMC30-F Starter Kit incl.
- T-Mac Frame TMC30-F (576398) incl. certificate and card-board transportation box
- CPU Box for TMC30-F (805143)
- T-Probe Cable 20 m (575973)
- Connection Cable T-Mac/CPU Box, 0.6 m (804824)

Hexagon's Manufacturing Intelligence division

Automation Products



- 577364 APODIUS Absolute Camera AAC
Vision system for automated high-accuracy feature inspection
Consisting of:
- AAC Vision Sensor with versatile mounter
 - AAC Explorer software package incl. interface to application software
 - AAC License Dongle software licence USB dongle
 - AAC Control Box active router for AAC Vision Sensor, routes signals between sensor and other peripherals
 - CB Data Cable 30 m GigE energy chain cable between AAC Control Box and computer, RJ45
 - CB Power Cable 20 m power energy chain cable for Control Box, M12 (Control Box), open wires
 - IO Cable AIC 30 m IO energy chain cable between Control Box and AIC/tracker, Dsub
 - IO Cable Robot 30 m IO energy chain cable between Control Box and robot control, M12 (Control Box), open wires (robot)
 - Data Connection Cable 10 m GigE torsion cable between ETM and AAC Control Box, Intercontec (Sensor), M12 x-coded (Control Box)
 - IO Connection Cable 10 m power and IO torsion cable between ETM and AAC Control Box, Intercontec (Sensor), M12 8-pol (Control Box)
 - AAC Calibration Set with calibration plate and OBC-file on USB drive

- 577365 AAC Electrical Toolchanger Upgrade Kit
Cable routing over existing toolchanger for flexible sensor handling with a robot
- Electrical Toolchanger Module (ETM) Robot side: M12 x-coded, M12 8-pol; Tool side: M12 x-coded, M12 8-pol
 - ETM Data Connection Cable 0.4 m GigE cable between sensor and ETM, Intercontec (sensor), M12 x-coded (ETM)
 - ETM IO Connection Cable 0.4 m power/IO cable between sensor and ETM, Intercontec (sensor), M12 8-pol (ETM)
 - ETM Data Robot Cable 10 m GigE torsion cable between ETM and AAC Control Box, M12 x-coded (instead of Data Connection Cable)
 - ETM IO Robot Cable 10 m power and IO torsion cable between ETM and AAC Control Box, M12 8-pol (instead of IO Connection Cable)



- 576406 Automation Interface Controller
The Automation Interface Controller provides handling capabilities of up to four Lasertrackers and multiple measurement devices such as T-Mac, T-Scan or external trigger source. Its digital I/O interface allows for bidirectional communication to a robotic or machine controller.
Includes: Product CD, Power Cable and 5 m LAN Cable (575899).
Compatibility: AT9x0



- 576407 Automation Multiplex Box
The Automation Multiplex (MUX) Box allows on machine switching between T-Mac and T-Scan for inspection purposes.
Compatibility: AT9x0

Hexagon's Manufacturing Intelligence division

Automation Products

Reflectors, Tape Targets and Styli



- | Article | Description |
|----------------|---|
| 6004501 | <p>TESA Touch Trigger Set for T-Mac Inspect
 Allow the TMC30-I to be used for touch trigger inspection.
 Includes:
 TESASTAR RP probe head with T-Mac interface, 100 mm probe extension, 5 mm ruby styli, calibration sphere and accessories.
 For use in an automated.
 Compatibility: AT9x0</p> |

Factory Fit



- | Article | Description |
|----------------|---|
| 576872 | <p>RTFP-EC, Real Time Feature Pack - EtherCAT
 The Real Time Feature Pack (RTFP) for AT930/960 Absolute Tracker (AT Controller) is designed to provide cyclic measurement data in real-time over the EtherCAT industrial fieldbus protocol.
 The RTFP acts as a slave in the external automation bus system.
 Note: The RTFP can be fitted in the factory or service Unterentfelden only.
 Compatibility: AT9x0</p> |

T-Scan Accessories

Mounting Solutions



- | Article | Description |
|----------------|---|
| 576936 | <p>Machine adaptation T-Scan 5 (vertical)
 including cable connection with ODU male connector (T-Scan type) to common cable (manuell connection).</p> |
| 576937 | <p>Machine adaptation T-Scan 5 (horizontal)
 including cable connection with ODU male connector (T-Scan type) to common cable (manuell connection).</p> |

Cables and Small Electronic Devices



- | Article | Description |
|----------------|--|
| 576192 | <p>MCA37, Automation Trigger Cable 2 m
 The MCA37 Automation Trigger cable connecting the T-Scan 5 Controller to the Automation Interface Controller (576406).</p> |

Hexagon's Manufacturing Intelligence division

Automation Products



- 576193 MCA38, T-Scan Sensor Extension Cable 10 m
With the MCA38 T-Scan Sensor Extension Cable, connecting the original T-Scan 5 Sensor cable, provides an extension of 10 m to a total T-Scan 5 sensor cable length configuration of 20 m (10 m + 10 m).
Compatibility: AT960



- 576194 MCA42, T-Scan Controller Automation Cable 2 m
The MCA42 T-Scan Controller Automation Cable 2 m connecting the T-Scan 5 Controller (819828) to the Automation Interface Controller (576406).
Compatibility: AT960



- 576196 MCA44, Automation Sensor Cable 10 m
The MCA44 Automation Sensor Cable 10 m connecting the T-Scan 5 or T-Mac Inspect (22pin T-Scan ODU-female connector) to the Automation Interface Controller (576406) or to the Automation Multiplex Box (576407).



- 576197 MCA45, T-Scan Sensor Automation Cable 50 m
The MCA45 T-Scan Sensor Automation Cable 50 m connecting the T-Scan 5 (T-Scan ODU-female connector) to the T-Scan 5 Controller (819828).
Note: The MCA45 can be used as a T-Scan Sensor Extension Cable.
Compatibility: AT960



- 576928 MCA76, T-Scan Sensor Automation Cable, 30 m
The MCA76 T-Scan Sensor Automation Cable 30 m connecting the T-Scan 5 (T-Scan ODU-female connector) to the T-Scan 5 Controller (819828).
Note: The MCA76 can be used as a T-Scan Sensor Extension Cable.
Compatibility: AT960

Hexagon's Manufacturing Intelligence division

Automation Products



576934 Roboter adaptation T-Scan 5 (vertical)
including cable 1.0 m with ODU connector changer (sensor side).

576935 Roboter adaptation T-Scan 5 (45° tilt orientation)
including cable 1.0 m with ODU connector (male sensor side).



576903 MCA47, T-Scan Trigger/Probe Cable 2 m
Connects AT960 Tracker Controller with T-Scan 5 and LASC-211 Controller unit.
Compatibility: AT960



576406 Automation Interface Controller
The Automation Interface Controller provides handling capabilities of up to four Lasertrackers and multiple measurement devices such as T-Mac, T-Scan or external trigger source. Its digital I/O interface allows for bidirectional communication to a robotic or machine controller.
Includes: Product CD, Power Cable and 5 m LAN Cable (575899).
Compatibility: AT9x0



576407 Automation Multiplex Box
The Automation Multiplex (MUX) Box allows on machine switching between T-Mac and T-Scan for inspection purposes.
Compatibility: AT9x0



576959 T-Scan CFK-Extension 400 to scan hidden areas based on external mounted T-Mac frames. It includes the mechanical interface to mount a T-Scan 5 and all mounting adapters for a T-Mac TMC30 starter kit and 3 additional T-Mac TMC30 frames. These frames have to be ordered separately.



576960 T-Scan CFK-Extension 550 to scan hidden areas based on external mounted T-Mac frames. It includes the mechanical interface to mount a T-Scan an all mounting adapters for a T--Mac TMC30 starter kit and 3 additional T-Mac TMC30 frames. These frames have to be ordered separately.



576961 T-Scan CFK-Extension 700 to scan hidden areas based on external mounted T-Mac frames. It incudes all mechanical interface to mount a T-Scan 5 and all mounting adapters for a T-Mac TMC30 starter kit and 3 additional T-Mac frames. These frames have to be ordered separately.

Hexagon's Manufacturing Intelligence division

Automation Products

Active Reflector



Article	Description
576938	<p>Active Reflector AR1</p> <p>The Active Reflector AR1 is a self-orienting reflector following perfectly oriented the laser trackers beam without any manual interaction.</p> <p>The max. tracking distance is 40 m at a speed of 60°/second. The AR1 has a short centering cylinder (20 mm diameter) as mounting interface and is battery operated. The AR1 is compatible with Leica Absolute Tracker AT930, AT960, AT402 and AT901.</p> <p>Dimensions: 90 mm x 160 mm x 210 mm (3.5433 in x 6.2992 in x 8.2677 in)</p> <p>Weight: 1700 g (3.75 lbs)</p> <p>The Active Reflector AR1 consists of:</p> <ul style="list-style-type: none">- Active Reflector AR1 and Transportation Case- Mounting Interface- 2 AA-Battery packs (8 batteries) rechargeable- Battery charging station <p>Compatibility: AT403, AT960</p>

μ-base



Article	Description
576183	<p>μ-base</p> <p>The stand alone ADM is a distance measurement unit with micron level resolution. The stand alone ADM includes: Factory CD with basic measurement SW, AC powersupply, cables, Tribraich mount with fine motion screws and red transportation case.</p>

Service Products

Product suggestions for CO AFM.
These Products cannot be ordered from the Tracker PL.

T-Mac

Article	Description
5003434	<p>Frame extension interface for T-Mac</p> <p>The Frame extension interface is required to connect additional T-Mac Frame TMC30-F (576398) to an existing T-Mac Basic TMC30-B (576400) or T-Mac Inspect TMC30-I (576410).</p> <p>Orderable from Laser Tracker Service Unterentfelden, Switzerland only. Please contact ps.ch@hexagonmetrology.com.</p>

Hexagon's Manufacturing Intelligence division

Automation Products

Apodius

Article	Description
5310138	<p>APODIUS Sensor Warranty Extension including calibration</p> <ul style="list-style-type: none">- 1 YearCalibration and Certification of the Sensor12 month warranty for the Sensor- has to be ordered within 8 weeks after initial purchase- can be purchased 2x to extend the warranty from 1st year (included) up to 3 years
5310139	<p>SW APODIUS Maintenance Extension - 1 Year</p> <ul style="list-style-type: none">- Participation in: online rollout of new software releases, updates and technical information- Support via Hexagon Service & Support- Can be purchased multiple times to extend from 1 year (included) up to more years

Hexagon's Manufacturing Intelligence division OEM

Brunson Mounting Solution



Article	Description
576893	<p>MAC55, Invar Reference Bar 1000 mm The low thermal expansion length Reference Bar provides a stable length for use during laser tracker or scanner jobs. The reference bar provides the following features and content:</p> <ul style="list-style-type: none"> - Supports 0.5", 7/8" and 1.5" Reflectors - Can be directly placed on the floor/table(3-point feet) - Bar length uncertainty of +/-0.007 mm (+/- 0.0003") - Certificate included - Case with contour-cut foam cushion interior - Weight: Bar alone, 1.45 kg (3.2 lbs); bar and case, 3.86 kg (8.5 lbs) <p>Compatibility: AT403, AT930, AT960</p>



576901	<p>MST36, Portable Metrology Tripod (Carbon) Designed for Leica Absolute Tracker and Romer Absolute Arms. The MST36 has the following features and deliverables:</p> <ul style="list-style-type: none"> - Collapsible tripod-type with carbon legs - Integrated bulls eye level - 1x kit of pad feet included - 1x Instrument adapter for AT930/960 or Romer Absolute Arms (3.5"x8 thread) - 1x Instrument adapter for AT40x and TPS6000 (5/8" thread) - 3x integrated fixture positions for AT Controllers (576871, 576368) or MPB25, Battery external Li-Ion 37V/8.1Ah (576875) - Adjustable Height: 83 - 118 cm (32.6 - 46.5") - Weight: 14.2 kg (31.3 lb) <p>Compatibility: AT403, AT930, AT960, ATS600</p>
--------	--



576904	<p>MAS52, Tripod Wheel Assembly Kit A wheel assembly kit is available for additional portability for the MST36 Tripod (576901). The wheels are engaged and disengaged simply by unlocking the telescoping leg and rotating it, putting the wheel in an upper or lower position. Remark: The wheel options must be installed at the factory. Please order the wheel assembly kit together with the tripod. Compatibility: AT403, AT930, AT960, ATS600</p>
--------	--

Hexagon's Manufacturing Intelligence division OEM



- 576919 **MAS70, Tripod Leveling Kit**
Utilize the Tripod Leveling Kit on the MST36 Tripod (576901) when measurements require a 3D device (such as a laser tracker) to establish a gravity-based coordinate system. Installation requires a simple hand adjustment to insert the leveling screw above the point or pad foot on each leg. The compact design adds only 17 mm of leg length in the retracted position while providing a large 19 mm precision adjustment range. A knurled sleeve provides the delicate touch needed to set level, eliminating any awkward locking mechanisms to disturb the instrument orientation. The all metal construction assures dependable operation in any measurement environment. Sold in sets of three (3) and weighs 0.3 kg each.
Note: The 576904 Wheel Assembly Kit will not operate with the Tripod leveling Kit installed.



- 577261 **235-5 Instrument Adapter**
For Instruments with 5/8"-11 Mount Requirements. The 235-5 converts a 3/4"-8 standard external instrument thread on any stand or adapter into a 5/8"-11 external thread to accommodate most theodolites or other instruments.
Specifications:
Effective height: 1.092" (27.7 mm) – this is the vertical distance between the lower interface surface (on this adapter, the very bottom) and the top, on which the instrument would rest Internal thread: 3/2"-8
Material: Stainless steel, Approx. weight: 3 lbs.
Compatibility: AT403



- 576954 **Adjustable Stand Extensions**
The adjustable instrument column, also called the "intermediate tube" with an instrument adapter turns your MST 36 fixed height stand into an adjustable stand. The adjustable instrument mount employs a handwheel-driven worm gear for up-and-down adjustment of the instrument column. The collar may then be clamped to avoid any inadvertent instrument movement. An adapter on top of the intermediate tube provides a standard external 3/2"-8 thread for mounting instruments or other adapters.
The adjustable column adds an additional 494 mm (19.5") of height.

Brunson Reflector Ref. Supports



- Article** **Description**
576052 Heavy Duty Magnetic Holder for tooling ball reflectors 0.5"
Compatibility: AT403, AT9x0



- 576102 Foundation Reflector Holder 1.5"

Hexagon's Manufacturing Intelligence division OEM



- 576104 Leica Lanyard Set (full)
For safe handling of 1.5" and 7/8" Red-Ring Reflectors. The set gives you everything required to secure the reflector either to your wrist or to many of the magnetic target holder. Two target holder collars are provided (1.6" and 2.0" diameter)
Compatibility: AT403, AT9x0, ATS600



- 576105 Leica Lanyard Set (partial)
For safe handling of 1.5" and 7/8" Red-Ring Reflectors. The set gives you everything required to secure the reflector to your wrist.
Compatibility: AT403, AT9x0, ATS600



- 576131 Double Vector for TBR, Shank A \varnothing 0.2500"
Compatibility: AT403, AT9x0



- 576134 Tripod Reflector Holder 1.5"



- 577001 Reflector Holder 1.5", Offset 24 mm, Shank 6 mm,
Body 25.4 mm, Stainless Steel.



- 577002 Reflector Holder 1.5", Offset 24mm, Shank \varnothing 8mm,
Body \varnothing 25.4mm, Stainless Steel



- 577003 Reflector Holder 1.5", Offset 24 mm, Shank \varnothing 12 mm,
Body \varnothing 25.4 mm, Stainless Steel

Hexagon's Manufacturing Intelligence division OEM

	<p>577101 Reflector Holder 1.5", Offset 25 mm, Shank Ø 6 mm, Body Ø 25.4 mm, Stainless Steel</p>
	<p>577102 Reflector Holder 1.5", Offset 25 mm, Shank Ø 8 mm, Body Ø 25.4 mm, Stainless Steel</p>
	<p>577103 Reflector Holder 1.5", Offset 25 mm, Shank Ø 10 mm, Body Ø 25.4 mm, Stainless Steel</p>
	<p>577104 Reflector Holder 1.5", Offset 25 mm, Shank Ø 12 mm, Body Ø 25.4 mm, Stainless Steel</p>
	<p>577120 Reflector Holder 1.5", Offset 1.0000", Shank Ø 0.2500", Body Ø 1.000", Stainless Steel</p>
	<p>577125 Reflector Holder 1.5", Offset 24 mm, Shankless, Body Ø 40.64 mm, Stainless Steel</p>
	<p>577126 Reflector Holder 1.5", Offset 25 mm, Shankless, Body Ø 40.64 mm, Stainless Steel</p>
	<p>577127 Reflector Holder 1.5", Offset 1.0000", Shankless, Body Ø 1.6000", Stainless Steel</p>
	<p>577128 Reflector Holder 1.5", Offset 24 mm, Shankless, Body Ø 40.64 mm, Magnetic Base, Stainless Steel</p>

Hexagon's Manufacturing Intelligence division OEM

- | | |
|---|--|
|  | 577129 Reflector Holder 1.5", Offset 25 mm, Shankless,
Body Ø 40.64 mm, Magnetic Base, Stainless Steel |
|  | 577130 Reflector Holder 1.5", Offset 1.0000", Shankless,
Body Ø 1.6000", Magnetic Base, Stainless Steel |
|  | 577135 Edge Reflector Holder 1.5", Offset 24 mm, Stainless Steel |
|  | 577136 Edge Reflector Holder 1.5", Offset 25 mm, Stainless Steel |
|  | 577137 Edge Reflector Holder 1.5", Offset 1.0000", Stainless Steel |
|  | 577140 Drift Nest 1.5", Offset 1.0000", Aluminium |
|  | 577201 Reflector Holder 0.5", Offset 10 mm, Shank Ø 5 mm,
Body Ø 12.7 mm, Stainless Steel |
|  | 577202 Reflector Holder 0.5", Offset 10 mm, Shank Ø 6 mm,
Body Ø 12.7 mm, Stainless Steel |
|  | 577203 Reflector Holder 0.5", Offset 10 mm, Shank Ø 8 mm,
Body Ø 12.7 mm, Stainless Steel |

Hexagon's Manufacturing Intelligence division OEM



577204 Reflector Holder 0.5", Offset 10 mm, Shank \varnothing 10 mm,
Body \varnothing 0.75", Stainless Steel



577205 Reflector Holder 0.5", Offset 10 mm, Shank \varnothing 12 mm,
Body \varnothing 0.75", Stainless Steel



577206 Reflector Holder 0.5", Offset 12 mm, Shank \varnothing 6 mm,
Body \varnothing 12.7 mm, Stainless Steel



577207 Reflector Holder 0.5", Offset 12 mm, Shank \varnothing 8 mm,
Body \varnothing 12.7 mm, Stainless Steel



577208 Reflector Holder 0.5", Offset 12 mm, Shank \varnothing 12 mm,
Body \varnothing 0.75", Stainless Steel



577209 Reflector Holder 0.5", Offset 0.3125",
Shank \varnothing 0.2500", Body \varnothing 0.5000", Stainless Steel



577210 Reflector Holder 0.5", Offset 0.5000",
Shank \varnothing 0.2500", Body \varnothing 0.5000", Stainless Steel



577220 Reflector Holder 0.5", Offset 10 mm, Body \varnothing 12.7 mm,
Shankless, Magnetic Base, Stainless Steel



577221 Reflector Holder 0.5", Offset 12 mm, Body \varnothing 12.7 mm,
Shankless, Magnetic Base, Stainless Steel



Hexagon's Manufacturing Intelligence division OEM



577222 Reflector Holder 0.5", Offset 0.5000",
Body Ø 0.5000", Shankless, Magnetic Base,
Stainless Steel



577230 Reflector Holder 0.5" Drift Nest, Offset 0.5000", Stainless Steel



577235 Reflector Holder 0.5" Target Corner,
Offset 0.5000", Stainless Steel



577250 Leica Laser Tracker - Imperial Reflector Holder Kit
Compatibility: AT403, AT9x0, ATS600



577251 Leica Laser Tracker - Metric Reflector Holder Kit
Compatibility: AT403, AT9x0, ATS600



577255 1.5" Total Station Sphere
A 1.5" Sphere for 3D manual sighting applications



577259 1.5" to 0.5" adapter
To be able to use a 0.5" reflector in a 1.5" nest
Compatibility: AT403, AT9x0



577302 Edge Reflector Holder 7/8", Offset 0.7500, Stainless Steel



577303 Reflector Holder 7/8", Offset 0.75", Shank 0.25",
Body 0.88", Stainless Steel



577304 Reflector Holder 7/8", Offset 0.75", Shank 0.375",
Body 0.88", Stainless Steel

Hexagon's Manufacturing Intelligence division OEM



577305 Reflector Holder 7/8", Offset 0.75", Shank 0.5",
Body 0.88", Stainless Steel



577310 Reflector Holder 7/8", Offset 0.7500", Shankless,
Body 0.88", Magnetic Base, Stainless Steel



577311 Tripod Reflector Holder 7/8"



577312 Drift Nest 7/8", Offset 0.700", Aluminium



577321 Edge Reflector Holder 7/8", Offset 20 mm, Stainles Steel



577322 Reflector Holder 7/8", Offset 20 mm, Shank 6 mm,
Body 22.2 mm, Stainless Steel



577330 Reflector Holder 7/8", Offset 20 mm, Shank 8 mm,
Body 22.2 mm, Stainless Steel



577334 Reflector Holder 7/8", Offset 20 mm, Shank 10 mm,
Body 22.2 mm, Stainless Steel



577336 Reflector Holder 7/8", Offset 20 mm, Shank 12 mm,
Body 22.2 mm, Stainless Steel



577337 Reflector Holder 7/8", Offset 20 mm, Shankless,
Body 22.2 mm, Magnetic Base, Stainless Steel

Hexagon's Manufacturing Intelligence division OEM



577359 1.5" to 7/8" adapter - to be able to use a 7/8" reflector in a 1.5" nest

Brunson Cart, Boxes and Cases



Article	Description
576905	<p>MAS53, Tripod Transportation Kit</p> <p>When shipping or packing requirements call for more protection, the MAS53 Tripod Transportation Kit (576905) nests the MST36 Portable Metrology Tribod (Carbon) (576901) and MAS54, Tripod Padded Bag (576906) padded bag into an ATA rated travel case for easy and safe transportation. This black injection molded plastic case has tilt wheels with a tow handle for easy pull-behind transport. A padlockable watertight lid is included for added security.</p> <p>Outside case dimensions are 45.1" (114.5 cm) long x 16.0" (40.6 cm) wide x 13.0" (33.0 cm) tall and has an empty weight of 31 pounds (5.9 kg).</p> <p>The 576905 MAS53, Tripod Transportation Kit includes the 576906 MAS54, Tripod Padded Bag and plastic case.</p> <p>Compatibility: AT930, AT960, ATS600</p>



576906	<p>MAS54, Tripod Padded Bag</p> <p>Add a durable black carrying bag for easy transport to and from the jobsite. This rugged nylon bag has padded sides and a structured bottom to protect the stand and accessories. Three convenient carrying options include handles, a shoulder strap, and built-in wheels with a tow handle. The wide mouth, double zippered opening makes for easy packing and unpacking. The bag is sized to fit the stand with dimensions of 40" (101.6 cm) long x 12" (30.5 cm) wide x 12" (30.5 cm) tall and is nicely branded with an embroidered HEXAGON logo.</p>
--------	--



HEXAGON

Hexagon is a global leader in sensor, software and autonomous solutions. We are putting data to work to boost efficiency, productivity, and quality across industrial, manufacturing, infrastructure, safety, and mobility applications.

Our technologies are shaping urban and production ecosystems to become increasingly connected and autonomous – ensuring a scalable, sustainable future.

Hexagon's Manufacturing Intelligence division provides solutions that utilise data from design and engineering, production and metrology to make manufacturing smarter. For more information, visit hexagonmi.com.

Learn more about Hexagon (Nasdaq Stockholm: HEXA B) at hexagon.com and follow us [@HexagonAB](https://twitter.com/HexagonAB).