

## Stream UP

The easiest way to capture underground utility assets



Flying, Agile, Smart, Timely, Easy to Use, Reliable.  
**FASTER** than anything else.

IDS GeoRadar: The leader in multi-frequency and multi-channel  
Ground Penetrating Radar

[www.idsgeoradar.com](http://www.idsgeoradar.com)

Stream UP is a multi-channel, multi-frequency, double-polarized and lightweight GPR system dedicated to utility mapping on extensive areas that facilitates the whole mapping process (before, during and after the acquisition).

## EASY IN ASSEMBLING

The system is easily stackable and can be carried even **on the acquisition vehicle** thanks to its **compactness** that increase its **transportability**. Stream UP is easy to assemble and can be moved to the survey location without any speed limit (only 2 people needed for transportation, assembly and just one person to make it operational).

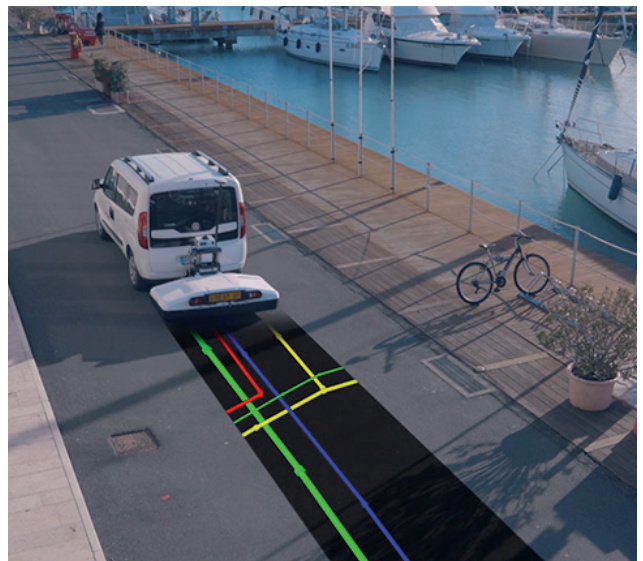
Easier than ever to assemble and to transport!



## SUSPENDED IN DATA ACQUISITION

Stream UP is able to operate in **urban environment** with **high speed** (suggested speed is up to 60 km/h), without a bulky vehicle and **ground contact**. Thanks to new Control Unit eDAD-S, dense array antennas and dynamic stacking, data quality has been maintained excellent even at high speed.

Furthermore, the innovative **suspended modular frame** is safer than ever thanks to **shell structure** and **embedded anti-collision system**. Stream UP is compliant with traffic regulations and there is no need for an escort vehicle.



## INNOVATIVE IN DATA PROCESSING

With IQMaps **machine time** has been reduced, **real-time processing** and **3D visualization** introduced. It provides a step by step approach to guide the user in performing the best and the quickest data analysis with the help of a customizable processing and analysis tool, both **for skilled and not skilled users**.

# Stream UP Configuration:

FULL-SCALE ACQUISITIONS: NO MORE FORCED LIMITS

## FEATURES AND BENEFITS



**Modular Structure and light shell:** logistics facilitated thanks to easiness in assembly and transportation



**Multi-frequency and double-polarization:** Standard architecture and double polarization of the whole Stream family have been improved



**Raised by the ground:** the total absence of contact with the ground dramatically reduces the stress and consequently maintenance



**Remote controlled:** connection between Stream UP and the driver is fully wireless and managed by uMap, the brand-new acquisition software for large scale projects that allows to be always georeferenced thanks to real-time GPS and cartographic maps



**Faster acquisition speed:** Stream UP acquisition speed and data quality higher than ever with the new control unit eDAD-S



**Approved by traffic laws:** Even in transportation configuration the speed is not limited by system needs but only refers to traffic regulations

Supply Control Unit

Adjustable Height System

GNSS Antenna and Pole

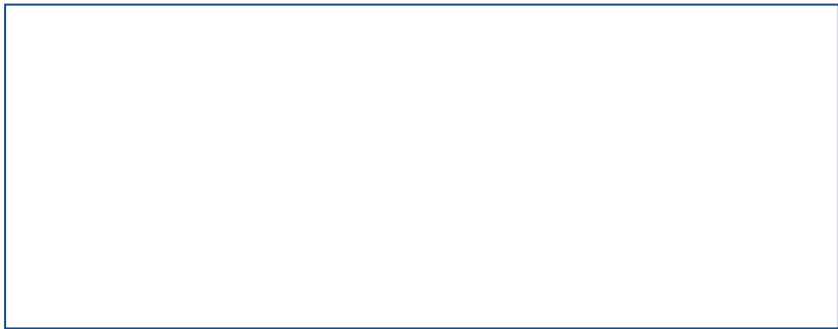
Altimeter

GPR Array Modules



## SYSTEM SPECIFICATIONS

OVERALL WEIGHT	95 kg [209.44 lb]	POSITIONING	GNSS, RTK, TPS
RECOMMENDED LAPTOP	Panasonic FZ55	NUMBER OF CONTROL UNITS	10 array modules + 1 Supply Control Unit
SUGGESTED ACQUISITION SPEED	Up to 60 km/h [37.3 mph]	MAXIMUM ACQUISITION SPEED	Up to 150 km/h [93.2 mph]
POWER CONSUMPTION	65 W (during acquisition)	POWER SUPPLY	12V car or external battery
RADAR COVERAGE	1.58 m [5.18 ft]	SYSTEM SIZE	1775 x 429 x 786 mm [69.9 x 16.9 x 30.9 in]
TOW BALL	50 mm ISO Standard	WATERPROOFING	IP65
SCAN RATE	9.230 scan/s @512 sample/scan	CONNECTOR TYPE	13-pin connector



**IDS GeoRadar Srl**  
Via Augusto Righi, 6, 6A, 8 -56121 Ospedaletto, Pisa,Italy  
Tel: +39 050 89 34 100  
[www.idsgeoradar.com](http://www.idsgeoradar.com)  
[info@idsgeoradar.com](mailto:info@idsgeoradar.com)