

Leica Pegasus:Two

Mobile reality capture



- when it has to be **right**

Leica
Geosystems

Leica Pegasus:Two – Vehicle and application independent reality capture sensor platform

The Leica Pegasus:Two enhances traditional projects and creates new business opportunities. Leveraging the concept of a multi-sensor platform, it can be combined with sky cameras for city modelling, thermal imaging for energy loss detection, an additional camera for pavement assessments, pollution sensors to assess air quality, and a ground penetrating radar for underground asset management.

You only need to conduct a data capture once to generate multiple revenue streams. Achieving survey-grade accuracy, the reality captured data creates new business opportunities and allows you to take on bigger projects.

Mobile surveying

Keep pace in this era of digital disruption by increasing efficiency and rentability. Pegasus:Two pays for itself. By moving the work site from the field to the office, employees are safer, insurance is less, and site visits are shorter.



Mobile digital surveying compared to traditional surveying at 10 mm accuracy



Immediate ROI

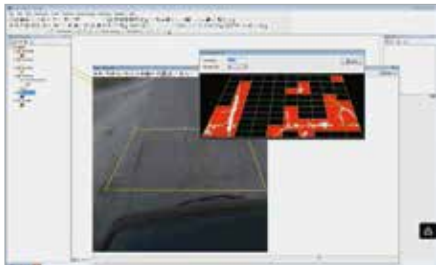
With digital surveying you eliminate multiple investments of equipment and maximise employees time to the fullest. The all-in-one platform plus the complete software workflow cuts your time in the field and office between 40 to 60 per cent compared to traditional surveying and makes sure you capture every detail in the field.



Create new revenue models

You only need to scan an area once to generate multiple revenue streams from one data set. With the external sync ports, you can plug in additional sensors including pollution sensors, thermal cameras and ground penetrating radar. The survey-grade accurate data creates opportunities to take on additional and bigger projects.

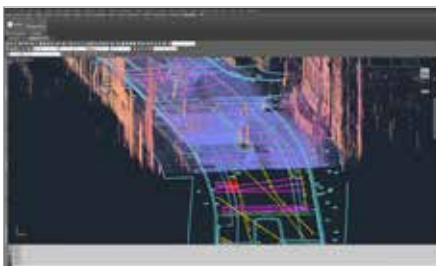
Collect once, **sell multiple times** – expand your revenue stream by collecting additional data with **innovative sensors**



PAVEMENT CAMERA

Leveraging the most advanced low noise laser profiler with the innovative pavement camera of the Pegasus:Two, extends analysis functions.

- Pavement crack index
- IRI index
- Road sign extraction
- Clearance analysis



GROUND PENETRATING RADAR

Detect buried assets and uncover potential dangers before digging to avoid damaging the utility infrastructure by upgrading to Pegasus:Stream.

- Pipe location
- Density change for water network leakage
- Cavities detection
- Buried objects



THERMAL SENSOR

Locate energy loss and overheating electricity network to prevent costly maintenance activities.

- Transformer temperature
- Fuses operability
- Energy auditing and inspection in residential areas
- Search and rescue missions



Vehicle-independent

As the vehicle and application independent solution, the Pegasus:Two serves road, rail and water based surveying. It captures calibrated imagery and point cloud data in one pass, and combined with SiRail Suite, it provides post-processing for all rail development and maintenance needs. Save time with the integrated work flow with AutoCAD and ArcGIS.



High accuracy

With a 200-year history of producing highly accurate solutions, Leica Geosystems technology benefits from a deep understanding of best practices. Combining a detailed overlay of the most current and accurate data, the Pegasus:Two ensures no critical aspect of any site is missed and delivers the accuracy any surveyor would expect.

Revolutionising the world of measurement and survey for nearly 200 years, Leica Geosystems creates complete solutions for professionals across the planet. Known for premium products and innovative solution development, professionals in a diverse mix of industries, such as surveying and engineering, safety and security, building and construction, and power and plant, trust Leica Geosystems to capture, analyse and present smart geospatial data. With the highest-quality instruments, sophisticated software, and trusted services, Leica Geosystems delivers value every day to those shaping the future of our world.

Leica Geosystems is part of Hexagon (Nasdaq Stockholm: HEXA B; hexagon.com), a leading global provider of information technologies that drive quality and productivity improvements across geospatial and industrial enterprise applications.



Illustrations, descriptions and technical data are not binding. All rights reserved.
 Printed in Switzerland – Copyright Leica Geosystems AG, Heerbrugg, Switzerland, 2016.
 821033en – 06.16



Leica Pegasus: Two
 Mobile reality capture



Leica Pegasus: Stream
 Mobile reality capture



Leica Pegasus: Backpack
 Mobile reality capture



Leica ScanStation P30/P40
 Because every detail matters

Leica Geosystems AG
 www.leica-geosystems.com



- when it has to be **right**

