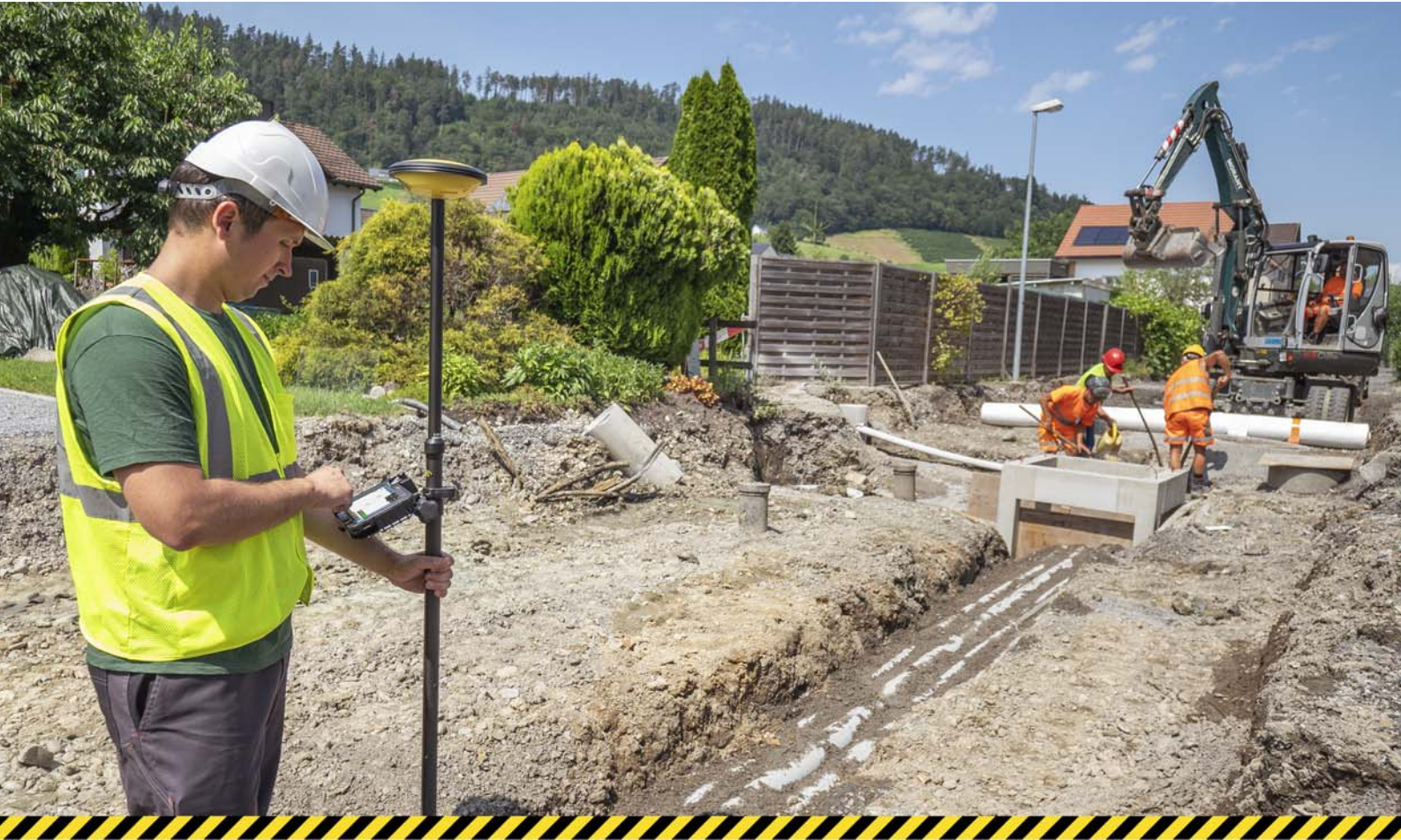


Leica iCON gps 30 Equipment List



- when it has to be **right**

Leica
Geosystems

Table of Contents

iCG30 GNSS Receiver	3
1 iCG30 GNSS Receiver	3
2 Additional iCG30 Receiver Options	3
Accessory	4
3 Additional Accessories for iCG30 Pole Setups - GNSS Rover	4
3.1 Survey Poles	4
3.2 Holder and Clamps	4
3.3 QuickStand	4
4 Container for iCG30 Receiver	4
5 Power Supply	5
5.1 Internal Batteries	5
5.2 Battery Chargers	5
6 Data Transfer Cable	5
Remote Control	6
7 Remote Control	6
7.1 CC80 iCON Controller	6
7.2 CC70 iCON Controller	6
7.3 Remote Control Packages with iCON Software	7
8 iCON Field Software and Apps	8
8.1 iCON site	8
8.2 Apps included in iCON Field Software	8
8.3 Optional Apps (not part of iCON site)	11
8.4 Apps and Functions included in iCON site plus	11
8.5 Time limited licenses	12
8.6 iCON site and iCON build for office data preparation and checking	12
Accessories for Remote Control	13
9 Accessories for CC80 and CC70 Tablet PC	13
9.1 Accessories	13
9.2 Holder and Clamps	13
Care Packages	14
10 Customer Care Packages	14
Trademarks	15
11 Trademarks	15
iCON gps Setups	17
12 iCG30 Construction Rover with CC80 or CC70 Tablet PC	17

iCG30 GNSS Receiver

1 iCG30 GNSS Receiver



878 651 **iCG30** Leica iCON gps 30

	Leica iCON 30
Supported GNSS Systems	
GPS L2	●
Multifrequency	○
GLONASS	○
Galileo	○
BeiDou	○
RTK Performance	
High Accuracy RTK	●
RTK unlimited	●
Position Update & Data Recording	
5 Hz positioning	●

● Standard
○ Optional

2 Additional iCG30 Receiver Options

iCG30 individual software options

878 662	CSW927	Multifrequency option
878 663	CSW928	GLONASS option
878 664	CSW929	Galileo option
878 666	CSW930	Beidou option

Accessory

3 Additional Accessories for iCG30 Pole Setups - GNSS Rover

3.1 Survey Poles



794 336	CRP1	Construction Pole, telescopic, cm-graduation, for MPR122 or GNSS antenna, upside-down use incl. plate. Carbon and aluminium, 2x 5/8" screws, 2x circular bubble, extendable.
795 054	CRP2	Construction Pole, telescopic, ft-graduation, for MPR122 or GNSS antenna, upside-down use incl. plate. Carbon and aluminium, 2x 5/8" screws, 2x circular bubble, extendable.
796 130	CRP3	Construction Pole, telescopic, ft-decimal graduation, for MPR122 or GNSS antenna, upside-down use incl. plate. Carbon and aluminium, 2x 5/8" screws, 2x circular bubble, extendable.
768 226	GLS13	Telescopic aluminium GNSS pole with 5/8" screw. Snap locks at 1.80 m and 2.00 m. Includes circular bubble.
752 292	GLS30	Telescopic carbon GNSS pole with 5/8" screw. Snap locks at 1.80 m and 2.00 m. Includes circular bubble.
806 685	CRP10	Construction Pole Tip, cm.
806 687	CRP11	Construction Pole Plate, cm.
855 146	CRP15	Quick Snap Connector. Allows fast and easy mounting of a GPS receiver on the pole.

3.2 Holder and Clamps



For CC80 iCON Controller

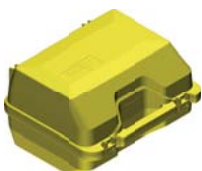
767 880	GHT63	Pole clamp for CMB10 Tablet holder.
833 211	CMB10	Tablet holder for CC80 Tablet PC. Can be attached to a pole with a GHT63 Pole clamp (not included) or used in a vehicle with a CMB11 Vehicle Adaptor Kit (not included).

3.3 QuickStand



560 138	GST6	Quickstand with 3 telescopic legs, for aluminium poles.
667 319	GSR111	Dual-strut support, for all GLS poles.

4 Container for iCG30 Receiver



 All iCG30 need to be ordered with at least one container.

855 150	CTC6	Carry Case for iCG30 SmartAntenna, CC80 field controller and accessories for a rover setup.
---------	-------------	---

5 Power Supply

5.1 Internal Batteries



772 806	GEB212	Lithium-Ion battery, 7.4V/2.6Ah, rechargeable. To be used with iCG30 receiver.
---------	---------------	--

5.2 Battery Chargers



799 185	GKL311	Single-bay Charger Professional 3000. Charger for one Li-Ion battery, including AC/DC adaptor and cigarette lighter cable.
---------	---------------	--

799 187	GKL341	Multi-bay Charger Professional 5000. Charges up to 4 batteries, including power cable.
---------	---------------	--

6 Data Transfer Cable



Serial cables

806 095	GEV269	Data transfer cable, converter cable Lemo to USB A connector, 2.0 m, connects GNSS receiver iCG30 with controller.
---------	---------------	--

Remote Control

7 Remote Control

7.1 CC80 iCON Controller



878 811	CC80-20	Rugged 7" Tablet PC, EU/RUS CC80-20 Ruggedized Win10 Tablet PC with iCON branded 7" screen, EU and Russia version, 10-point capacitive multi touch daylight-readable screen, Intel Core i5-7Y57 up to 3.3GHz, 128GB SSD hard drive, 4GB SDRAM, WLAN 802.11 a/b/g/n, Bluetooth v4.1, integrated 4G module, Integrated L1 GPS, extended battery (7.1 Ah), 8MP camera with flash, Stylus and AC/DC adaptor.
878 812	CC80-21	Rugged 7" Tablet PC, US/CAN CC80-21 Ruggedized Win10 Tablet PC with iCON branded 7" screen, USA and Canada version, 10-point capacitive multi touch daylight-readable screen, Intel Core i5-7Y57 up to 3.3GHz, 128GB SSD hard drive, 4GB SDRAM, WLAN 802.11 a/b/g/n, Bluetooth v4.1, integrated 4G module, Integrated L1 GPS, extended battery (7.1 Ah), 8MP camera with flash, Stylus and AC/DC adaptor.
878 813	CC80-22	Rugged 7" Tablet PC, AUS/NZ/IND CC80-22 Ruggedized Win10 Tablet PC with iCON branded 7" screen, Australia and New Zealand version, 10-point capacitive multi touch daylight-readable screen, Intel Core i5-7Y57 up to 3.3GHz, 128GB SSD hard drive, 4GB SDRAM, WLAN 802.11 a/b/g/n, Bluetooth v4.1, integrated 4G module, Integrated L1 GPS, extended battery (7.1 Ah), 8MP camera with flash, Stylus and AC/DC adaptor.
878 814	CC80-23	Rugged 7" Tablet PC, China CC80-23 Ruggedized Win10 Tablet PC with iCON branded 7" screen, China version, 10-point capacitive multi touch daylight-readable screen, Intel Core i5-7Y57 up to 3.3GHz, 128GB SSD hard drive, 4GB SDRAM, WLAN 802.11 a/b/g/n, Bluetooth v4.1, integrated 4G module, Integrated L1 GPS, extended battery (7.1 Ah), 8MP camera with flash, Stylus and AC/DC adaptor.
878 815	CC80-24	Rugged 7" Tablet PC, Japan CC80-24 Ruggedized Win10 Tablet PC with iCON branded 7" screen, Japan version, 10-point capacitive multi touch daylight-readable screen, Intel Core i5-7Y57 up to 3.3GHz, 128GB SSD hard drive, 4GB SDRAM, WLAN 802.11 a/b/g/n, Bluetooth v4.1, integrated 4G module, Integrated L1 GPS, extended battery (7.1 Ah), 8MP camera with flash, Stylus and AC/DC adaptor.
881 162	CC80-25	Rugged 7" Tablet PC, South Korea CC80-25 Ruggedized Win10 Tablet PC with iCON branded 7" screen, South Korea version, 10-point capacitive multi touch daylight-readable screen, Intel Core i5-7Y57 up to 3.3GHz, 128GB SSD hard drive, 4GB SDRAM, WLAN 802.11 a/b/g/n, Bluetooth v4.1, Integrated L1 GPS, extended battery (7.1 Ah), 8MP camera with flash, Stylus and AC/DC adaptor.

7.2 CC70 iCON Controller



881 163	CC70-0	Rugged 7" Tablet PC, EU/RUS CC70-0 Ruggedized Win10 Tablet PC, 7" screen, EU and Russia version, 10-point capacitive multi touch daylight-readable screen, Intel Core i5-7Y57 1.0GHz, 128GB SSD hard drive, 4GB SDRAM, WLAN 802.11 a/b/g/n, Bluetooth v4.1, integrated 4G module, Integrated L1 GPS, 8MP camera with flash, Stylus and AC/DC adaptor.
881 164	CC70-1	Rugged 7" Tablet PC, US/CAN CC70-1 Ruggedized Win10 Tablet PC, 7" screen, USA and Canada version, 10-point capacitive multi touch daylight-readable screen, Intel Core i5-7Y57 1.0GHz, 128GB SSD hard drive, 4GB SDRAM, WLAN 802.11 a/b/g/n, Bluetooth v4.1, integrated 4G module, Integrated L1 GPS, 8MP camera with flash, Stylus and AC/DC adaptor.
881 165	CC70-2	Rugged 7" Tablet PC, AUS/NZ/IND CC70-2 Ruggedized Win10 Tablet PC, 7" screen, Australia and New Zealand and India version, 10-point capacitive multi touch daylight-readable screen, Intel Core i5-7Y57 1.0GHz, 128GB SSD hard drive, 4GB SDRAM, WLAN 802.11 a/b/g/n, Bluetooth v4.1, integrated 4G module, Integrated L1 GPS, 8MP camera with flash, Stylus and AC/DC adaptor.

881 166	CC70-3	Rugged 7" Tablet PC, China CC70-3 Ruggedized Win10 Tablet PC, 7" screen, China version, 10-point capacitive multi touch daylight-readable screen, Intel Core i5-7Y57 1.0GHz, 128GB SSD hard drive, 4GB SDRAM, WLAN 802.11 a/b/g/n, Bluetooth v4.1, Integrated L1 GPS, 8MP camera with flash, Stylus and AC/DC adaptor.
881 167	CC70-4	Rugged 7" Tablet PC, Japan CC70-4 Ruggedized Win10 Tablet PC, 7" screen, Japan version, 10-point capacitive multi touch daylight-readable screen, Intel i5-7Y57 1.0GHz, 128GB SSD hard drive, 4GB SDRAM, WLAN 802.11 a/b/g/n, Bluetooth v4.1, integrated 4G module, Integrated L1 GPS, 8MP camera with flash, Stylus and AC/DC adaptor.
896 148	CC70-5	Rugged 7" Tablet PC, South Korea CC70-5 Ruggedized Win10 Tablet PC, 7" screen, South Korea version, 10-point capacitive multi touch daylight-readable screen, Intel Core i5-7Y57 1.0GHz, 128GB SSD hard drive, 4GB SDRAM, WLAN 802.11 a/b/g/n, Bluetooth v4.1, Integrated L1 GPS, 8MP camera with flash, Stylus and AC/DC adaptor.

7.3 Remote Control Packages with iCON Software

	iCON site	
	CC70 BT	CC80 BT
	6015589	6010333
Sensors		
CC80 Tablet PC		●
CC70 Tablet PC	●	
Software		
CSW202, iCON site	●	●
Documentation		
User Manual iCON site	●	●
Quick Guide iCON CC70 and CC80	●	●
Leica USB-Card-Folder A5 iCON	●	●

 iCONstruct Field Software CCPs have to be ordered as part of the packages

8 iCON Field Software and Apps

8.1 iCON site

For CC80 and CC70 iCON Controller

793 852	CSW202	iCON site. Includes: iCON apps "Data Collection", "Stakeout", "Draw", "Cut & Fill", "Volumes", "Slopes", "Reports" and "MC Calibration".
821 268	CSW240	iCON site entry. Includes: iCON apps "Data Collection", "Stakeout" and "Draw", "Cut & Fill".

Optional apps for iCON site on CC80 and CC70 iCON Controller

793 857	CSW203	iCON app "Sketch"
793 859	CSW205	iCON app "Control Line"
793 851	CSW208	iCON app "Layout Lines"
793 855	CSW204	iCON app "Volumes"
793 849	CSW209	iCON app "Cut & Fill"
793 848	CSW210	iCON app "Checks"
793 844	CSW213	iCON app "Roading" (only for CC80)
793 156	CSW220	iCON app "Slopes"
793 843	CSW214	iCON app "MC Calibration". Supports Excavator & Wheel Loader calibration.
821 269	CSW241	iCON site entry upgrade. Includes: iCON apps "Slopes", "Reports" and "MC Calibration".
793 842	CSW215	iCON site plus. Includes: iCON apps "Sketch", "Control Line", "Layout Lines" and "Checks".
851 300	CSW243	iCON app "Layout Objects" (only for CC80)
851 301	CSW244	iCON app "2Face&Set"
876 584	CSW255	iCON app "Hidden Point"
881 301	CSW260	iCON app "Tilted Plane Setup"
881 302	CSW261	iCON app "Drill Pattern"

Leica ConX apps for iCON field on CC80 and CC70 iCON Controller

818 727	CSW234	Leica ConX 1 Year License. Enables Leica ConX View, Sync and Track for iCON field.
818 728	CSW235	Leica ConX 2 Years License. Enables View, Sync and Track for iCON field.
818 729	CSW236	Leica ConX 3 Years License. Enables Leica ConX View, Sync and Track for iCON field.
818 730	CSW237	v 1 Day License. Enables Leica ConX View, Sync and Track for iCON field.

ADSK BIM 360 access for iCON field on CC80 and CC70 iCON Controller

881 300	CSW259	"ADSK BIM 360 Docs" 1 Year
887 972	CSW263	"ADSK BIM 360 Docs" 2 Years
887 974	CSW264	"ADSK BIM 360 Docs" 3 Years

8.2 Apps included in iCON Field Software

	iCON site entry	iCON site
General:		
• Graphical selection of point from map	●	●
• Graphical navigation to point	●	●
• StatusBar+ with shortcuts	●	●
• MaxMap with button transparency	●	●
• Map OPS+ with intelligent map controls	●	●
• IntuiNav+ with traffic light quality checks	●	●
• Sound notification on point storing	●	●
• Selection of pre-set pole height	●	●
• 3D View	●	●
• Camera support on CC80 and CC70	●	●
• Internal GPS support on CC80 and CC70	●	●

	iCON site entry	iCON site
Sketching includes: <ul style="list-style-type: none"> • Point Pilot quick point creation • Close figure • Radius Point & long/short radius • Point Projection • Point & Line calculations • Arc calculations • Offset calculations • Point Computation (intersections, ...) • Patterns • Trace 	- - - - ● ● ● ● - -	- - - - ● ● ● ● - -
As-Built / Measure / Data Collection includes: <ul style="list-style-type: none"> • Data Collection • Coding • Auto points logging • Target Shift calculations • Auto line drawing • Auto arc creation 	● ● ● ● ● ●	● ● ● ● ● ●
Checks includes verification of: <ul style="list-style-type: none"> • Distance (horizontal, vertical, sloped) • Slope (degree, percent, ratio) • Area • Perimeter • Block volume • Included angle & azimuth 	- - - - - -	- - - - - -
Stakeout includes: <ul style="list-style-type: none"> • Graphical navigation to point • Graphical navigation to lines • Create & edit points • Create polylines & arcs • 3D offset • Define chainage • Add reference line to stakeout point • Flip Line (Start and End Point) • Create points & lines with bearing and distance • Divide lines • Automatic selection of next point (Nearest Distance, Next Point from List, Nearest from List) 	● ● ● ● ● ● ● ● ● ● ●	● ● ● ● ● ● ● ● ● ● ●
Cut & Fill includes: <ul style="list-style-type: none"> • Cross-section view • Set orientation according to direction of travel and fixed direction • Cut/Fill view with large deviation values and colour coded • Get cut/fill values to a defined elevation (e.g. type in elevation, balanced site elevation from terrain model) • Define vertical offset • Colour indication of Cut vs. Fill, same as Machine Control • Graphical coloured visualisation of cut/fill areas • Several terrain models usable in parallel • Select reference line as visual guidance 	● ● ● ● ● ● ● ● ●	● ● ● ● ● ● ● ● ●
Volumes includes: <ul style="list-style-type: none"> • Create surfaces in the field • Edit surfaces in the field • Stockpile calculation • Various volume calculations (to point, to elevation, to 2nd surface) • Apply compaction factor • Create brakelines for surface 	- - - - - -	● ● ● ● ● ●

	iCON site entry	iCON site
Slopes includes: <ul style="list-style-type: none"> • Create slopes on the fly • Display either as ratio, percent or degree • Graphical "cross-section" view • Support of vertical & horizontal "slopes" • Determination of daylight line 	- - - - -	● ● ● ● ●
Point List includes: <ul style="list-style-type: none"> • List view of points of active jobs • Search for points via ID, Code or elevation • Search for range • Define task lists • Edit, sort, create points 	- - - - -	● ● ● ● ●
Setup includes: <ul style="list-style-type: none"> • Control line setup • Setup anywhere • Setup over known point • Set orientation • Height Transfer • Over height benchmark • Get station coordinates from map, from GPS or enter manually • Setup Pilot (fully automatic free-station) 	- ● ● ● - ● ● ●	- ● ● ● - ● ● ●
Coordinate system: <ul style="list-style-type: none"> • Small area, large area, 3D transformation • All common projections • View Scale factor and set Scale factor to 1.0 • GNSS Height Transfer 	● ● ● ●	● ● ● ●
Reports: <ul style="list-style-type: none"> • Volume • Checks • As-Built/Measure/Data Collection • Stakeout/Layout • Quantify • GNSS Base Setup • GNSS Setup • TPS Setup 	- - - - - - - -	● ● ● ● ● ● ● ●
MC Calibration: <ul style="list-style-type: none"> • Unified way to calibrate an excavator • Unified way to calibrate a wheel loader • Unified way to calibrate a snow groomer • View calibration values for transfer to Machine Control software 	- - - -	● ● ● ●
Data import: ASCII, DXF, HeXML	●	●
Data export: Custom ASCII (e.g. CSV, TXT), DXF, GSI, GEO, HeXML	●	●

- All options and functionality available
- Not available

8.3 Optional Apps (not part of iCON site)

<p>Roading includes:</p> <ul style="list-style-type: none"> • Support of alignment and stringlines files • Import HeXML stringline data from 3rd party CAD and design packages • Use same data on the machine and in the field • Stakeout via cross-section view • Hold-Slope function • Stakeout at defined chainage / stationing with cross section • Layer selection for staking out • Create cross-sections within a defined range • Create corridor for Road model
<p>Surface Pilot includes:</p> <ul style="list-style-type: none"> • 3D vehicle in map views • Light bar indicators for cut/fill and offset deviations • Stakeout via long-section view
<p>Leica ConX includes:</p> <ul style="list-style-type: none"> • View and control screen remotely • Sync: Transfer data from and to the Office and Field • Track current location remotely
<p>Layout Objects includes:</p> <ul style="list-style-type: none"> • Support of Object-driven layout process • Import of IFC files from BIM authoring tools • Handling of IFC Classes • 3D visualisation of design models • Selection of single or multiple objects for layout • Layout straight from 3D object • Automatic generation of Object's corners and edges • Visualisation of object attributes • Map organisation and object selection via typical IFC tree structure • Straightforward process to fill layout list from object selection
<p>2Face&Set includes:</p> <ul style="list-style-type: none"> • Total station measurements in two faces • Set of angle measurements for new control points • Automated process in combination with robotic total stations
<p>Milling Pilot includes</p> <ul style="list-style-type: none"> • 3D milling machine in map views • Milling screen • Milling specific info panel values • Differential cut/fill calculation between two surfaces
<p>Hidden Point includes:</p> <ul style="list-style-type: none"> • Configuration of the hidden point pole • Measure and store hidden points

8.4 Apps and Functions included in iCON site plus

	iCON site entry upgrade	iCON site plus
Apps:		
• iCON app "Volumes"	●	-
• iCON app "Stakeout" (Points & Polylines)	●	-
• iCON app "Cut&Fill"	●	-
• iCON app "Slopes"	●	-
• iCON app "Checks"	-	●
• iCON app "Sketch" (full)	-	●
• iCON app "Control Line"	-	●
• iCON app "Layout Lines" (Parallels & Perpendiculars)	-	●
• iCON app "Checks"	-	●
• iCON app "MC Calibration"	●	-
• iCON app "Slopes"	●	-

	iCON site entry upgrade	iCON site plus
Functionality:		
• HotSwap Button for MC	-	-
• Favourites	-	-
• Set Orientation	-	-
• Station number in Setup	-	-
• Point Pilot	-	●
• Bay Windows (incl. rotate & align)	-	●
• Patterns (incl. rotate & align)	-	●
• Trace (incl. rotate & align)	-	●
• WLAN support	-	●
• Height Transfer	-	●
• Zlider Bar	-	●
• Camera support on CC80 and CC70	-	-
• Internal GPS support on CC80 and CC70	-	-
● All options and functionality available		
- Not available		

8.5 Time limited licenses

For CC80 and CC70 iCON Controller

851 307	CSW248	iCON site Time Limited.
---------	---------------	-------------------------

Optional apps for site on CC80 and CC70 iCON Controller


851 309	CSW248	iCON site plus Time Limited.
---------	---------------	------------------------------

851 310	CSW249	iCON app "Layout Objects" Time Limited (only for CC80).
---------	---------------	---

851 311	CSW250	iCON app "2Face&Set" Time Limited
---------	---------------	-----------------------------------

851 312	CSW251	iCON app "Roading" Time Limited (only for CC80)
---------	---------------	---

852 489	CSW253	Leica ConX Time Limited
---------	---------------	-------------------------

 Combination of iCON Field Time Limited options must be defined in initial order. No combination with standard iCON Field options possible. Variable duration, between one and 52 weeks.

8.6 iCON site and iCON build for office data preparation and checking



iCON prep Software for PC (Office)

6011691	CSW350	iCON prep
---------	---------------	-----------


Accessories for Remote Control

9 Accessories for CC80 and CC70 Tablet PC

9.1 Accessories

	General Accessories		
	833 213	CA32	Hand strap for Tablet PC.
	833 222	CA33	Stylus for Tablet PC.
	832 122	GHT77	Tether for CA33 Stylus for Tablet PC.
	851 479	CA40	Display protection plain foil for CC80 Tablet PC
	881 169	CA42	Display protection foil kit for CC70 Tablet PC
	834 384	CBC13	Docking station for Tablet PC and CBA2 Li-Ion battery. AC/DC Adapter not included (use AC/DC adaptor CBC3, CBC4, CBC5, CBC6, CBC7 or CBC10).
	Battery Pack and Charger		
	833 220	CBA2	Li-Ion battery pack 7.2 V / 7.1 Ah for Tablet PC, chargeable, for extended battery life.
	881 168	CBA3	Li-Ion Battery pack 7.2 V / 3.2 Ah, chargeable.
833 221	CBC9	4-bay charger for CBA2 Li-Ion battery pack. AC/DC adaptor not included (use AC/DC adaptor CBC12.)	
	Power Adaptors		
	833 214	CBC3	AC/DC adaptor (EU) for Tablet PC.
	833 215	CBC4	AC/DC adaptor (UK) for Tablet PC.
	833 216	CBC5	AC/DC adaptor (US) for Tablet PC.
	833 217	CBC6	AC/DC adaptor (AUS) for Tablet PC.
	833 218	CBC7	AC/DC adaptor (CH) for Tablet PC.
	833 235	CBC10	AC/DC adaptor (JP) for Tablet PC.
	834 378	CBC12	AC/DC adaptor for CBC9 4-bay charger.
	833 219	CBC8	Vehicle adaptor and charger 12-32 VDC for Tablet PC. Can be used to power and charge directly from a cigarette lighter socket.

9.2 Holder and Clamps

	833 211	CMB10	Tablet holder. Can be attached to a pole with a GHT63 Pole clamp (not included) or used in a vehicle with a CMB11 Vehicle Adaptor Kit (not included).
	767 880	GHT63	Pole clamp for CMB10 Tablet holder.
	833 212	CMB11	Vehicle adapt kit for mounting a CMB10 Tablet holder for Tablet PC into a vehicle. GHT63 clamp and CMB10 tablet holder not included.
	6010273		Vehicle holder package, consisting of GHT63 Pole clamp and CMB11 Vehicle adapt kit.

Care Packages

10 Customer Care Packages



A wide selection of comprehensive Customer Care Packages (CCPs) is available bundling Hardware Maintenance, Software Maintenance, Customer Support and Extended Warranty.
For more information about the CCP offering in your country please contact your local Leica Geosystems organization or distribution partner.

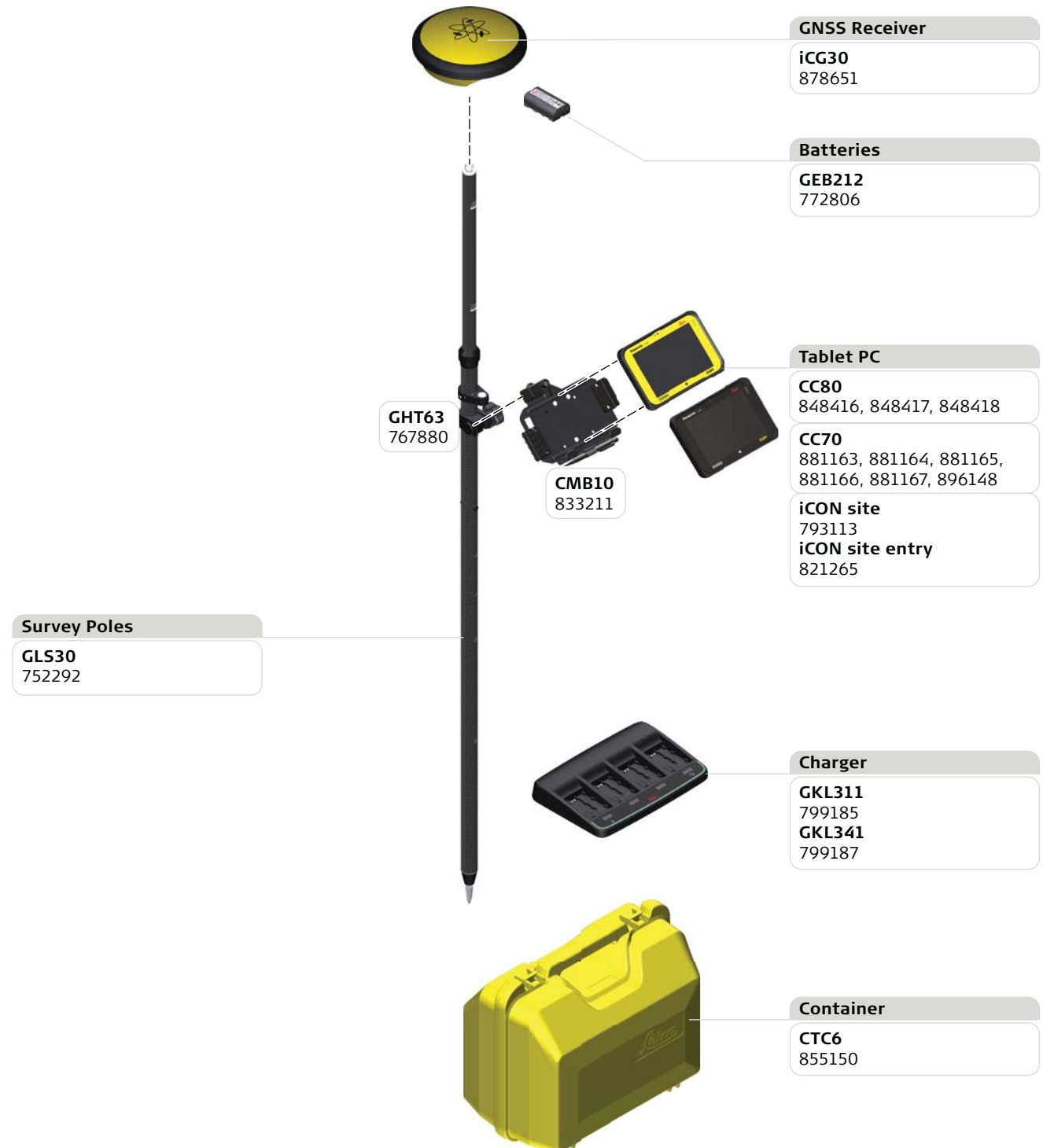
Trademarks

11 Trademarks

The *Bluetooth*® word mark and logos are owned by Bluetooth SIG, Inc. and any use of such marks by Leica Geosystems AG is under license.
Other trademarks and trade names are those of their respective owners.

iCON gps Setups

12 iCG30 Construction Rover with CC80 or CC70 Tablet PC



Revolutionising the world of measurement and survey for nearly 200 years, Leica Geosystems is the industry leader in measurement and information technologies. We create complete solutions for professionals across the planet. Known for innovative product and solution development, professionals in a diverse mix of industries, such as surveying and engineering, building and heavy construction, safety and security, and power and plant trust Leica Geosystems for all their geospatial needs. With precise and accurate instruments, sophisticated software, and trusted services, Leica Geosystems delivers value every day to those shaping the future of our world.

Leica Geosystems is part of Hexagon (Nasdaq Stockholm: HEXA B; hexagon.com), a leading global provider of information technology solutions that drive productivity and quality across geospatial and industrial landscapes.

Illustrations, descriptions and technical specifications are not binding and may change.
Printed in Switzerland - Copyright Leica Geosystems AG, Heerbrugg, Switzerland, 2019.
881722 - 1.0.0en - VII.19